

# Marmosets: A Neuroscientific Model of Human Social Behavior

Cory T. Miller,<sup>1,\*</sup> Winrich A. Freiwald,<sup>2</sup> David A. Leopold,<sup>3</sup> Jude F. Mitchell,<sup>4</sup> Afonso C. Silva,<sup>5</sup> and Xiaoqin Wang<sup>6</sup>

<sup>1</sup>Cortical Systems and Behavior Laboratory, University of California, San Diego, 9500 Gilman Dr., La Jolla, CA 92093, USA

<sup>2</sup>Laboratory of Neural Systems, The Rockefeller University, 1230 York Ave., New York, NY 10065, USA

<sup>3</sup>Section on Cognitive Neurophysiology and Imaging, Laboratory of Neuropsychology, National Institute of Mental Health, National Institutes of Health, 6001 Executive Blvd., Bethesda, MD 20892, USA

<sup>4</sup>Department of Brain and Cognitive Sciences, University of Rochester, 358 Meliora Hall, Rochester, NY 14627, USA

<sup>5</sup>Section on Cerebral Microcirculation, Laboratory of Functional and Molecular Imaging, National Institute of Neurological Disorders and Stroke, National Institutes of Health, 6001 Executive Blvd., Bethesda, MD 20892, USA

<sup>6</sup>Laboratory of Auditory Neurophysiology, Department of Biomedical Engineering, Johns Hopkins University School of Medicine, 720 Rutland Ave., Baltimore, MD 21205, USA

\*Correspondence: [corymiller@ucsd.edu](mailto:corymiller@ucsd.edu)

<http://dx.doi.org/10.1016/j.neuron.2016.03.018>

The common marmoset (*Callithrix jacchus*) has garnered interest recently as a powerful model for the future of neuroscience research. Much of this excitement has centered on the species' reproductive biology and compatibility with gene editing techniques, which together have provided a path for transgenic marmosets to contribute to the study of disease as well as basic brain mechanisms. In step with technical advances is the need to establish experimental paradigms that optimally tap into the marmosets' behavioral and cognitive capacities. While conditioned task performance of a marmoset can compare unfavorably with rhesus monkey performance on conventional testing paradigms, marmosets' social behavior and cognition are more similar to that of humans. For example, marmosets are among only a handful of primates that, like humans, routinely pair bond and care cooperatively for their young. They are also notably pro-social and exhibit social cognitive abilities, such as imitation, that are rare outside of the Apes. In this Primer, we describe key facets of marmoset natural social behavior and demonstrate that emerging behavioral paradigms are well suited to isolate components of marmoset cognition that are highly relevant to humans. These approaches generally embrace natural behavior, which has been rare in conventional primate testing, and thus allow for a new consideration of neural mechanisms underlying primate social cognition and signaling. We anticipate that through parallel technical and paradigmatic advances, marmosets will become an essential model of human social behavior, including its dysfunction in neuropsychiatric disorders.

## I. Introduction

There has been considerable interest recently in the common marmoset (*Callithrix jacchus*) as a neuroscientific model organism. This renewed focus on an already established animal model species (Bendor and Wang, 2005; Chaplin et al., 2013; Fritsches and Rosa, 1996; Roberts et al., 1994; Roberts and Wallis, 2000; Wang et al., 2005) has been driven, at least in part, by the prospect of developing primate transgenic lines (Izpisua Belmonte et al., 2015; Kaiser and Feng, 2015). There is, however, some debate as to the suitability of marmosets, compared to more widely used animal models, especially the rhesus monkey and mouse, respectively, for tapping into higher aspects of human cognition and for functional dissection of neural circuitry. On the one hand, marmosets share with humans core features of brain architecture and function (Bendor and Wang, 2005; Chaplin et al., 2013; Mitchell and Leopold, 2015) and the complex social and cognitive behaviors typical of the primate Order (Digby, 1995; Digby and Barreto, 1993; Huber and Voelkl, 2009; Voelkl and Huber, 2007). On the other hand, marmosets are a unique species with their own distinct evolutionary history and behavioral repertoire. Most notably, they are unusually small primates,

and in that respect nearly opposite to humans. While this difference can be a hindrance in studying some aspects of brain organization and function, the small size offers a number of distinct experimental advantages. In weighing these factors against those of more widely used experimental models, many researchers have concluded that the marmoset model is likely to play a prominent role in the next chapter of neuroscience (Izpisua Belmonte et al., 2015). Here we argue that this species is particularly promising as a model for studying neural circuits of social behaviors and their dysfunctions in neuropsychiatric disorders.

Primates are perhaps best distinguished from other animals by their (our) sophisticated societies and the manner in which individuals understand and navigate these complexly structured and dynamic social systems. Like other social mammals (Barnett, 1958; Blumstein, 2013; Crook et al., 1976; Hofer and East, 1993; Mann et al., 2000; Wittemeyer and Getz, 2007), primate social hierarchies are organized along familial lines (Mitani et al., 2012), but since social knowledge is not limited to ego-centric relationships (Barton and Dunbar, 1997; Cheney and Seyfarth, 1990, 2007; Seyfarth and Cheney, 2015; Seyfarth et al., 2005), the capacity for communication may be much larger

and the complexity of the rules governing social interaction may be much higher. Social rule learning is a critical component of primate cognitive development (Byrne and Bates, 2010; Cheney et al., 1995; Seyfarth and Cheney, 2012; Tomasello and Call, 1997), for which primates appear to have specialized mechanisms (Flombaum and Santos, 2005; Hare et al., 2001; van de Waal et al., 2013; Voelkl and Huber, 2007). Nonhuman primates can exhibit social tactics familiar to humans, such as deception and strategic alliances (Byrne and Whiten, 1989; le Roux et al., 2013; Palombit et al., 1997). Thus, the social landscape of primates is fraught with unique challenges and opportunities (Toarmino et al., 2016).

Circuits for interpreting social landscapes and making decisions must be adaptive and accommodate learning over both short and long timescales to understand the context and consequences of behavior. Primates excel in modeling and predicting the actions of other group members based on knowledge of their respective relationships gained during prior interactions (Byrne and Bates, 2010; Cheney and Seyfarth, 1990, 2007; Toarmino et al., 2016). An individual's social participation and knowledge encompasses visual observation, active communication, the testing of social rules, and strategic thinking—skills that together have shaped the evolution of the primate brain (Adolphs, 2009; Frith and Frith, 1999; Ghazanfar and Santos, 2004). These core human behaviors are notably affected in a range of human mental disorders, where it is the interaction with other members of society that is most obviously affected (Kennedy and Adolphs, 2012). However, our understanding of the brain circuits that steer real-world human social interaction is limited, in large part due to the constraints of measuring brain activity in humans and the limits of existing behavioral paradigms in relevant model organisms.

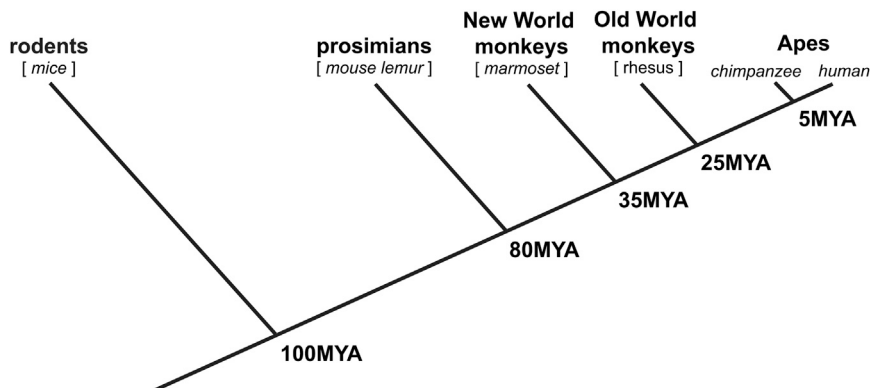
A major challenge for studying active social behavior in primates has been the limitations of existing paradigms. Marmosets may be better suited for developing and implementing such paradigms than other species, particularly as a model for human social interaction. Like humans, marmosets are among the few primates that pair-bond (Digby and Barreto, 1993) and engage in cooperative care of their young (French, 1997; Solomon and French, 1997). Cooperative breeding in humans and marmosets is thought to have coevolved with a unique set of social cognitive behaviors, including prosociality (Burkart et al., 2009a; Burkart and van Schaik, 2010). A case in point of this prosociality is food sharing. Marmosets allow group members to remain in close proximity during feeding (Day et al., 2003) and share foods with unrelated conspecifics even without an opportunity for reciprocity (Burkart et al., 2007). Most of the cognitive elements underlying prosocial behavior are likely to be a shared feature of the primate brain; however, the cooperative behaviors shared by marmosets and humans are uncommon among primates, including those great apes most similar to humans (Hare et al., 2007; Wobber et al., 2010). It is only through the interaction with species-specific societies that these and other types of cooperative behaviors are expressed in some primate societies. Marmosets also exhibit sophisticated forms of observational social learning (Burkart et al., 2009b) and are one of the only non-ape species to demonstrate imitation (Bugnyar and Huber, 1997; Voelkl and Huber, 2000). Because marmosets are

small in body size (~300–400 g), they can be housed in the laboratory in their species-typical family units that naturally give rise to rich interaction and social communication in laboratory conditions. The marmoset brain, though lissencephalic (smooth), possesses the shared neural architecture of primates (Chaplin et al., 2013; de la Mothe et al., 2006, 2012; Mitchell and Leopold, 2015; Solomon and Rosa, 2014), including potential homologous cortical substrates underlying complex perceptual processes, such as pitch discrimination (Bendor and Wang, 2005; Song et al., 2016; Wang and Walker, 2012). Modern technological methods make it feasible to track the activity of neural circuits under such conditions (Eliades and Wang, 2008a, 2008b, 2013; Miller et al., 2015; Roy and Wang, 2012). Thus, just as active exploration of natural landscapes by rats led to the discovery of place cells and grid cells, the core building blocks of circuits for spatial cognition (O'Keefe and Dostrovsky, 1971), studies of marmosets exploring their social landscape may lead to similarly fundamental insights into social brain function. While it is possible that some of the resemblance is only superficial, such as cooperative parenting (Saito, 2015), the extent to which shared social behaviors are supported by homologous neural mechanisms remains an empirical question.

The primary aim of this Primer is to highlight recent experimental, technological, and conceptual advances that provide a foundation for developing the marmoset into a model for the neuroscientific study of social behaviors as are found in humans and their psychiatric disorders. First, we briefly review the merits and limitations of current animal models of human social circuits. We then discuss how active visual and acoustic signaling in marmosets could provide a road map for developing models of natural human social interaction. We conclude with a brief discussion of the prospects for gene editing methods in the marmoset and how these could be combined with natural social experimental paradigms to understand the basis for human neuropsychiatric disease.

## II. Rodent and Monkey Models of Human Social Behavior

Establishing animal models of human social behavior necessitates evidence of similarities in sociality, as well as its underlying neurobiological mechanisms. Certain core features of social behavior are shared among mammals, as are the corresponding features of circuits in the brain. Much of what we understand about the neurobiology of social interaction comes from research in rats, mice, and voles (Beery and Kaufer, 2015; Insel and Young, 2001; Young, 2002). This is despite peripheral adaptations that are very different from humans, most notably the importance of olfaction for social perception (Barnett, 1958; Grant, 1963; Wolff and Sherman, 2007). Rodents engage in intricate parental care (Insel and Young, 2001), demonstrate reciprocal cooperation in some situations (Viana et al., 2010), and aid distressed cage mates even at a cost to themselves (Ben-Ami Bartal et al., 2011). Social interactions among rodent species are typically mitigated by the issuance of specific signals, such as vocalizations (Arriaga and Jarvis, 2013; Portfors, 2007) and odor cues (Arakawa et al., 2008; Lin et al., 2005), which can be perceived by conspecifics at a distance. Nearby interactions are also facilitated by tactile behavior (Bobrov et al., 2014; Brecht, 2007; Grant, 1963). These cues convey information ranging from social



**Figure 1. Primate Evolutionary Tree**

Cladogram showing the evolutionary divergence between humans, rodents, and each of the main primate taxonomic groups and estimated time points of divergence (MYA, millions of years ago).

recognition to the presence of a predators or other threats (Johnston, 2003; Shelley and Blumstein, 2005; Wesson, 2013) and facilitate forms of social learning, such as that for food preference (Galef and Kennett, 1987; Laland and Plotkin, 1993). These social tendencies have often been used to support the use of rodents as models of human social behavior. Indeed, humans exhibit analogous social behaviors, as do many other gregarious mammals (Bradbury and Vehrencamp, 2011; Gariépy et al., 2014; Hecht et al., 2012; Heinrich, 2011; Madden et al., 2009, 2011; Mann et al., 2000; Rendell and Whitehead, 2001; Wittemeyer and Getz, 2007). Rather than serve as a model of human-specific sociality, these aspects of rodent sociality likely reflect more general mammalian characteristics that evolved prior to our last common ancestor and the divergence of the species (Emes et al., 2003; Li et al., 1990; Murphy et al., 2001) (Figure 1).

The neurobiology of rodent social interaction has led to several important discoveries on underlying neural circuits and neurochemicals relevant to many social vertebrates, including humans. Studies of oxytocin in rodents, for example, have shown that this neuropeptide is critical to a broad range of social behaviors, such as maternal care, attachment, and affiliation (Insel and Young, 2001). Oxytocin knockout mice (OTKO) develop normal olfactory bulbs but have significantly impoverished social recognition (Ferguson et al., 2000). Notably, oxytocin plays a similarly fundamental role in social attachment for humans (Feldman, 2012; Feldman et al., 2016; Kosfeld et al., 2005). Likewise, social aggression and recognition in mice are mediated by the vasopressin 1b receptor in hippocampal CA2 pyramidal neurons (Caldwell et al., 2008; Pagani et al., 2015; Wersinger et al., 2002). Mice with lesioned (Stevenson and Caldwell, 2014) or optogenetically inactivated (Hitti and Siegelbaum, 2014) CA2 showed a significant reduction in social recognition (Dudek et al., 2016). Although direct evidence of CA2 function in humans is limited, some patients with social neuropsychiatric disorders (e.g., schizophrenia, autism, etc.) have exhibited abnormalities in CA2 (Meyer-Lindenberg et al., 2011). These similarities in the neurobiology of social behavior in rodents and humans likely reflect a common mammalian heritage and have maintained their adaptive value and function in most, if not all, mammals because the social contexts in which they function have remained critical in all mammalian societies (e.g., parental care, recognition, affiliation, etc.).

However, because individual mammalian taxa evolved distinctive, idiosyncratic social behaviors, rodent studies must be complemented by studies in primates. Many of these idiosyncratic behaviors relate directly to aspects of social interaction. Each species faces a unique set of challenges in its social landscape and must employ distinct strategies for social interactions. As sociality varies immensely among mammals, individual species' brains are marked by very different social adaptations. In primates, social behavior relies strongly upon visual and acoustic communication and, in contrast to most mammals, depends minimally on chemical and olfactory signaling. In the visual domain, the interpretation of faces and bodily postures is particularly important, with primates' high visual acuity permitting the analysis of these visual cues from a distance of several meters or more. Most experimental work to date has focused on faces, which are particularly important for human social communication. Faces are inherently salient, are controlled with a high degree of precision by specialized muscles and neural mechanisms, and serve as the basis for conveying a spectrum of meaningful social signals (Fridlund, 1994; Leopold and Rhodes, 2010). At each moment, a person's face carries a wealth of information for a perceiver, including individual identity, gender, and emotional state (Micheletta et al., 2015; Parr and Heintz, 2009; Preuschoft, 1995, 2000). The importance of facial communication is reflected in the fine differentiation of facial musculature in primates and the putative specialization for face processing in high-level visual cortex and subcortical structures (Desimone et al., 1984; Gothard et al., 2007; Hoffman et al., 2007; Maior et al., 2010; Perrett et al., 1985; Sugase et al., 1999; Tsao et al., 2006; Vick et al., 2007; Weiner and Grill-Spector, 2015). Brain imaging and electrophysiological experiments have shown that multiple "face patches" are evident in the temporal lobe of humans, rhesus monkeys, and marmosets (Hung et al., 2015; Kanwisher et al., 1997; Tsao et al., 2008), suggesting that such a network might be a core feature of the primate social brain. Current studies are investigating specialization among such regions for extracting different types of information from faces, such as head orientation, direction of gaze, individual identity, body context, and facial motion (Fisher and Freiwald, 2015a, 2015b; Freiwald and Tsao, 2010; Hoffman and Haxby, 2000; Leopold et al., 2006; Polosecki et al., 2013).

While much has been learned regarding layout and basic response properties of face-specialized areas, our knowledge vis-à-vis social interaction runs up against the limitations imposed by conventional paradigms in which animals are restrained. For example, neurophysiological investigations of face selectivity have primarily relied on contrasting responses to the brief presentation of stimuli from different visual categories. A recent study

found that responses collected under such circumstances were minimally predictive of the role of individual cells under more naturalistic viewing conditions (McMahon et al., 2015). Face-selective neurons recorded during free viewing of natural social videos responded to features other than faces, such as the perceived distance to an individual or group. Furthermore, neighboring neurons within a few hundred microns of one another responded at very different times during the video. Importantly, individual neurons were highly deterministic in their responses when the same video clip was repeated; thus, the difference among neurons reflected a genuine specialization to different features of the video. Free viewing of video stimuli revealed a fascinating new dimension of social perception; neurons in the amygdala were sometimes highly sensitive to where an animal was looking. Specifically, a population of neurons responded the most when the subject looked at the eye of an animal in the video, while a subclass of neurons responding only during “eye contact,” when the animal in the video was also looking at the camera (Mosher et al., 2014). Given the importance of eye contact and the rules governing it for primate social communication, these neural responses may be critical for understanding high-level aspects of primate social signaling, such as communication, attachment, threat, and gaze following. Together, these early studies using free viewing of social videos illustrate that even a relatively moderate relaxation of conventional testing paradigms can lead to deep new insights into the neurobiological basis of primate social perception.

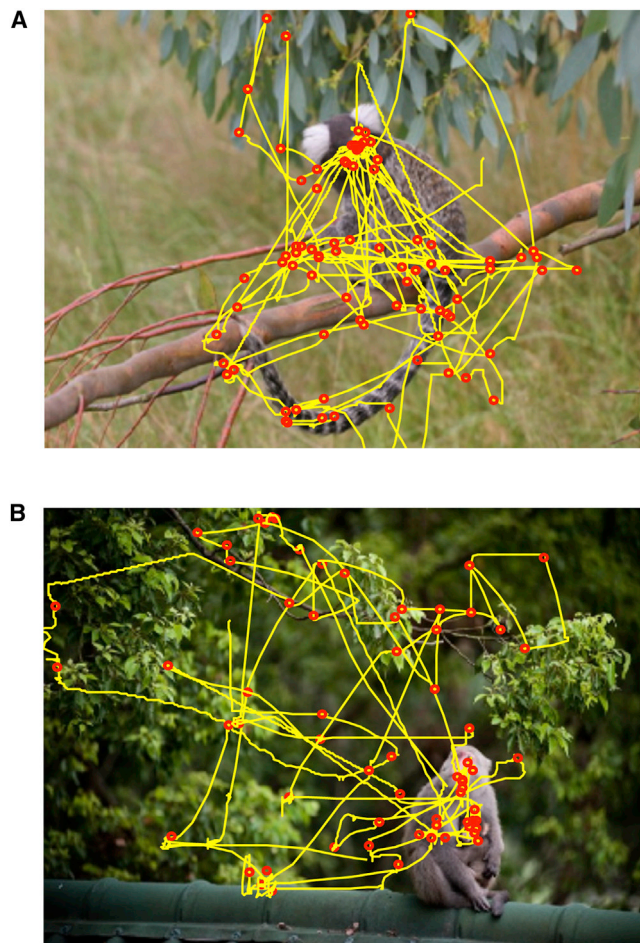
Other behavioral and neurophysiological experiments in rhesus monkeys have used paradigms that emphasize active decision making, especially during direct social interaction between animals. As a precursor, an early experiment studying the inclination of subjects to select which photo they preferred to look at demonstrated distinct preferences for certain socially relevant stimuli (e.g., female perinea) over others (e.g., low-ranking males) (Deaner et al., 2005), with these choices reflected in the activity of neurons in parietal cortex (Klein et al., 2008). Such choice behavior depends not only on the stimulus but also on the impact a choice has on another animal observer (Chang et al., 2011). For example, in one experiment, the choice of one animal (the Actor) determined whether the Actor, the Observer, both, or neither animal received a reward. Distinct areas of frontal cortex and anterior cingulate cortex played complementary roles in subjects' choices based on outcome (Chang et al., 2013). In perhaps the most compelling of these results, neurons in the dorsal anterior cingulate were monitored while two monkeys interacted during a Prisoner's Dilemma game, in which the monkeys could choose to cooperate for a larger reward outcome in the long term (Haroush and Williams, 2015). Individual cingulate neurons were sensitive to distinct aspects of these interactions, including predictions about the *other* monkey's ensuing choice. These and related studies (Azzi et al., 2012; Lee, 2010) illustrate that social information is weighed when primates make decisions and that neurons associated with decision making are impacted by the nuances of the context and related social perception. More importantly, they suggest that certain neurobiological processes may only be evident during active social interactions. Decisions are not solely based on the value of a particular stimulus, but on the relative choices of another conspecific in the interaction. Given that much of the

sophistication evident in primate social cognition relates to the acquisition of social knowledge and its implementation for strategies to succeed in the primate social landscape, further study of active social interactions and signaling is likely to be particularly significant in future discoveries about the neurobiology of primate social behavior.

To unravel the neural basis of human social behavior, animal models have been and will continue to be critical. The strength of rodent models is the precision modern technologies afford for dissecting neural circuits (Aston-Jones and Deisseroth, 2013; Deisseroth, 2011; Oh et al., 2014), along with the relative ease in setting up direct social interaction (Gunaydin et al., 2014; Peça et al., 2011). The strengths of primate models are shared perceptual domains and immediate relevance to humans. In the next section, we argue that marmosets provide a path to apply the advantages of circuit dissection to the primate brain. The marmoset model supporting this effort is rooted in important aspects of its natural behavior, as well as recent technical and conceptual advances that afford the opportunity to study the neurobiology of active social interactions in the primate brain.

### III. Paradigms to Investigate the Neurobiology of Marmoset Social Behavior

Marmosets are prolific explorers of their social landscape. In addition to the sophisticated facets of social behavior discussed above, marmosets possess an expansive system for social signaling to navigate the complex nuances of their societies. Communication in this species includes social grooming (Lazaro-Perea et al., 2004) and scent-marking behavior (Abbott, 1984; Abbott et al., 1997; Lazaro-Perea et al., 1999; Smith, 2006; Smith et al., 2001), but as is typical among primates, there is a clear dominance of visual (de Boer et al., 2013; Kemp and Kaplan, 2013) and vocal signaling (Bezerra and Souto, 2008; Chen et al., 2009; Miller et al., 2010b; Miller and Wang, 2006; Norcross and Newman, 1993; Pistorio et al., 2006). Traditional head-restrained preparations constrain neurobiological studies of social signaling in marmosets, as in other primates. Where this small New World primate differs, however, is that neural studies of their social behavior are not limited to this paradigm. Because marmosets can live in large extended family groups in captivity and engage in normal social interactions, it is possible to study the neural basis of natural interactions in an experimentally controlled fashion. In Old World primates, such as the rhesus monkey, such studies are difficult due to the high costs associated with building suitably large enriched habitats as well as the more aggressive disposition of the species. Techniques developed for recording single-unit activity in freely moving marmosets significantly expands the range of behaviors that can be studied with electrophysiology (Eliades and Wang, 2008a; Roy and Wang, 2012). Neurophysiology is but one of the many methods used to study neural function. Several other techniques could be modified from existing technology employed in rodents for use in these small-bodied primates, including calcium imaging (Flusberg et al., 2008; Helmchen et al., 2001; Sadakane et al., 2015) and optogenetics. Ultimately, the greatest value of marmosets may emerge when methods to record and manipulate neural activity are applied to the study of active social behavior and signaling.



**Figure 2. Natural Visual Behavior in Marmosets**  
(A and B) Scan patterns of a marmoset attending to social stimuli (Mitchell et al., 2014). Note the repeated saccades to the face in each image. (B) The first saccade away from the face was in the direction of the gaze.

Social signaling in primates presents something of a paradox. Despite many examples of high social aptitude within the rules of their society (Hare et al., 2001, 2006; Rosati et al., 2010), the repertoire of social signals (e.g., facial expressions, vocalizations, piloerection, etc.) is notably limited. One might expect that the demonstrable complexity in social interaction might be matched by a broad “vocabulary” for social communication. Yet, one of the lessons from primate ethology is that communication does not amount to a catalog of social signals but must instead be seen within the broader context of an existing social scene of interacting individuals, in which environment, social dominance, and recent history strongly influence signals are used and interpreted (Engh et al., 2006; Seyfarth and Cheney, 2014). Even in the case of human language, which is much richer in its content, the meaning behind a word or sentence is often highly contextual (Dunbar, 2003; Fitch et al., 2010). Future studies of active social signaling, likely in the marmoset, may shed greater light on the roles of social monitoring, memory, and other cognitive operations in language comprehension. Importantly, it also provides a path to study neural mechanisms

relevant to language, which need not be limited to vocal signals (McGurk and MacDonald, 1976). Thus, while isolated aspects of social communication can be studied in other taxa (e.g., signal processing, vocal learning, etc.), the idiosyncratic nuances of how social signals weave into the fabric of the primate social landscape, and the distinct neural processes that may emerge as a result of coordinating interactions in these scenes (Hasson et al., 2012), may necessitate a primate model.

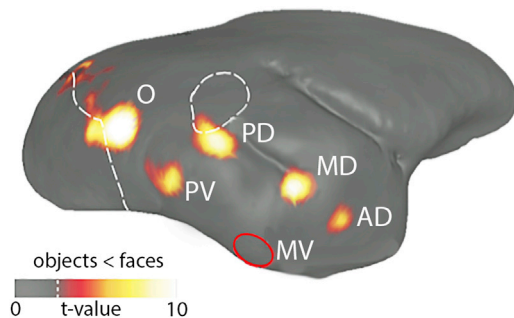
Marmosets provide unique opportunities for laboratory studies of the neural basis of active communication. We discuss two components of marmoset social signaling—gaze following and antiphonal calling—as representative case studies of how this approach can be applied in the species.

### Gaze Following

More than other mammals, primates rely on vision to monitor their social landscape and coordinate social interactions (Allman, 1977). Key to this process is the face and the direction it is pointed. The direction of a conspecific’s gaze also provides conspecifics with critical information about relevant information in the environment, such as food, predators, and pertinent social interactions. Primates use each other’s gaze direction as a spatial cue to direct their attention toward common points of interest, a group of behaviors termed “joint attention” (Tomasello, 1995). The significance of this visual behavior in primates is evidenced by its rapid development and role in more sophisticated aspects of social cognition. In human infants, for example, recognition of whether a face is making direct eye contact or not emerges by 1–4 months, while the ability to follow the direction of an averted gaze is evident soon after (4–6 months) (Farroni et al., 2002, 2003; Gómez, 2005). By comparison, other aspects of face processing, such as recognition of emotional expression (Herba and Phillips, 2004) and individual identity (Carey and Diamond, 1994; McKone et al., 2012), appear later in childhood. Joint attention provides a key channel to communicate the location of important items, for example, in predator avoidance or food foraging. The basic features of joint attention are found across primates and, where data are available, also appear early in development (Tomasello and Carpenter, 2005), although at differing levels of sophistication across species (Rosati and Hare, 2009).

Marmosets, like other primates, are keenly interested in social stimuli such as faces (Hung et al., 2015; Mitchell et al., 2014). Evidence for the reading of faces and bodily postures comes from studies of observational learning of adult foraging skills by juvenile observers (Schiel and Huber, 2006). While marmosets routinely direct their gaze to faces and bodies (Mitchell et al., 2014), the kind of information that they extract and utilize is an open area of research. Close inspection of Figure 2 (panel A) reveals that gaze is primarily directed to internal facial features. This observation suggests that detailed information related to identity or facial behavior is gathered rather than more general species-related information, which might be gathered from external features like the ear tufts.

In contrast, there already is clear evidence that marmosets use gaze information as a cue for shared attention in both experimental and natural contexts. Although Old World primates use the eyes to determine direction of gaze in addition to head, Callitrichids appear to rely predominantly on head-direction cues



**Figure 3. The “Face-Patch” System in Marmosets**

MRI functional map contrasting faces and objects reveals five discrete areas in the extrastriate cortex that are significantly more responsive to face stimuli in awake marmosets (Hung et al., 2015). A sixth face patch, indicated by a red circle and labeled area MV, was detected with ECoG but not with fMRI due to signal dropout. Color bar below represents the t value scale.

(Santos and Hauser, 1999). This difference likely reflects the fact that larger monkeys and apes often move their eyes only to shift gaze, while marmosets tend to rotate their head rather than their eyes when shifting their gaze (Heiney and Blazquez, 2011; McCrea and Gdowski, 2003). Marmosets have been shown to perform geometrical gaze following, using gaze cues of other individuals to orient toward objects beyond their line of sight (Burkart and Heschl, 2006), although their understanding of what is seen by the other individual (i.e., visual access) is less clear (Burkart et al., 2007; Rosati and Hare, 2009). Determining the extent to which a primate can infer the mental state or knowledge of a conspecific based on where they are looking is an inherently challenging experimental question (Flombaum and Santos, 2005; Hare et al., 2001, 2006), which has not been explicitly studied in marmosets. In natural contexts, several behaviors that coordinate activity between group members are likely to rely on the shared attention signals mediated by gaze following. The “mobbing” behavior exhibited by groups when a terrestrial predator intrudes on their territory provides one example (Epple, 1975; Ferrari and Ferrari, 1990; Passamani, 1995). When a predator is detected, a group of marmosets engages in an elaborate and coordinated response (Barros et al., 2002; Clara et al., 2008). A marmoset detecting a threat will orient itself toward its location, maintain gaze on it, and repeatedly emit a sharp “mobbing” (tsik) call. The extent to which this orientation cue is used by other group members to detect the predator has not been manipulated experimentally. Marmosets are also willing to follow the gaze of human experimenters, for example, in searching for particular food locations (Burkart and Heschl, 2006). These behaviors could be leveraged under experimental contexts to provide a platform for studying gaze and social interactions. With paradigms suitable to track gaze following in less restrained contexts, such as family groups living in a home cage, it would be possible to study its emergence in ontogeny (Teufel et al., 2010; Tomasello et al., 2001) and developmental neurobiology. Marmosets possess a system of face-selective regions across temporal cortex (Hung et al., 2015) similar to that in rhesus monkeys and humans (Tsao et al., 2006, 2008) (i.e., “face patches”; Figure 3). Focused neurophysiological recordings in these and neighboring locations (Marciniak et al., 2014) as marmosets

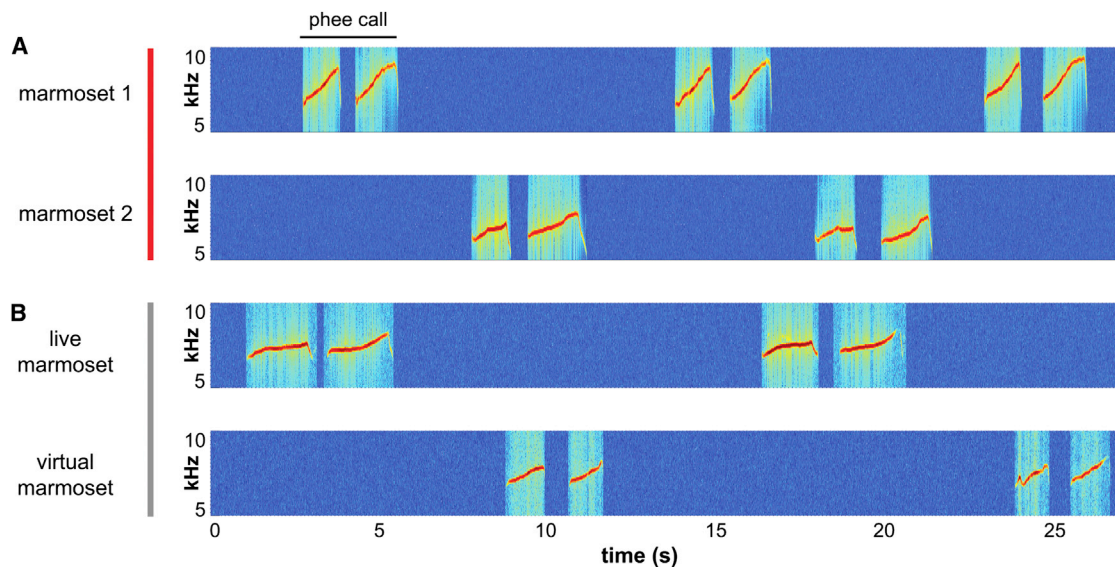
engage in gaze following and other communication behaviors involving faces and facial expressions are likely to be particularly significant for determining the functional role that this circuit plays in active social signaling.

### Antiphonal Calling

Marmosets are notably voluble primates. Their proclivity to produce vocal signals at high rates contrasts with many Old World primates, including rhesus monkeys, and is thought to be an adaptation to the dense vegetation in the forest habitats that marmosets have lived throughout their evolutionary history (Morrell et al., 2013; Rylands et al., 2009). Limits imposed on visual signaling from vegetation may have necessitated the use of vocal signals for maintaining social contact with conspecifics. Using its rich vocal repertoire, the species engages in near tonic level of vocal signaling to communicate with conspecific group members and maintain social interactions in their forest habitat (Agamaite et al., 2015; Bezerra and Souto, 2008; Epple, 1968). The significance of vocal signals for mitigating social interactions in marmosets presents an opportunity to investigate the dynamic relationship between social behavior, cognition, and communication at both the behavioral and neurobiological levels in this primate model.

When marmosets are visually occluded from each other, they commonly engage in a conversational exchange known as antiphonal calling (Miller et al., 2010b; Miller and Wang, 2006; Norcross and Newman, 1993) (Figure 4A). Adult marmosets rarely interrupt each other during these conversations, but rather take turns alternating successive calls in bouts of vocal exchanges (Miller and Wang, 2006; Takahashi et al., 2013). The rhythm of these exchanges is governed by rules reflecting social relationships (e.g., cagemate, sibling, sex, age, etc.) (Chen et al., 2009; Chow et al., 2015; Miller et al., 2010b; Miller and Wang, 2006; Norcross and Newman, 1997). Marmosets will cease to interact with callers who deviate from the correct temporal pattern (Miller et al., 2009a). Callers exert control over several aspects of signal production during this behavior, ranging from a motor plan about the structure of the vocalization to avoiding sources of acoustic interference (Miller et al., 2009b; Roy et al., 2011). During an experiment in which noise was broadcast with different periodicities, for example, pairs of marmosets coordinated the timing of their behavior to both avoid the interference and maintain turn taking within the constraints of the environment (Roy et al., 2011). The dynamics of these vocal exchanges are also learned during ontogeny (Chow et al., 2015). Young marmosets must learn to take turns, use the correct call type, and follow the appropriate periodicity of the exchange based on the social context. Evidence also suggests that parents may play a role in guiding the development of this behavior (Chow et al., 2015). Several characteristics of this behavior parallel conversations in humans (Bruner, 1975; Snow, 1977; Stivers et al., 2009), suggesting that antiphonal calling may be a valuable model for understanding the social and developmental influences on language.

The natural antiphonal conversations in marmosets are an ideal behavior in which to apply recent technical advances to neurobiological studies of primate social behavior and active social signaling. A series of experiments recording the activity of auditory cortex neurons as marmosets naturally produced vocalizations were the first to apply the freely moving neurophysiology



**Figure 4. Antiphonal Calling Conversations in Marmosets**

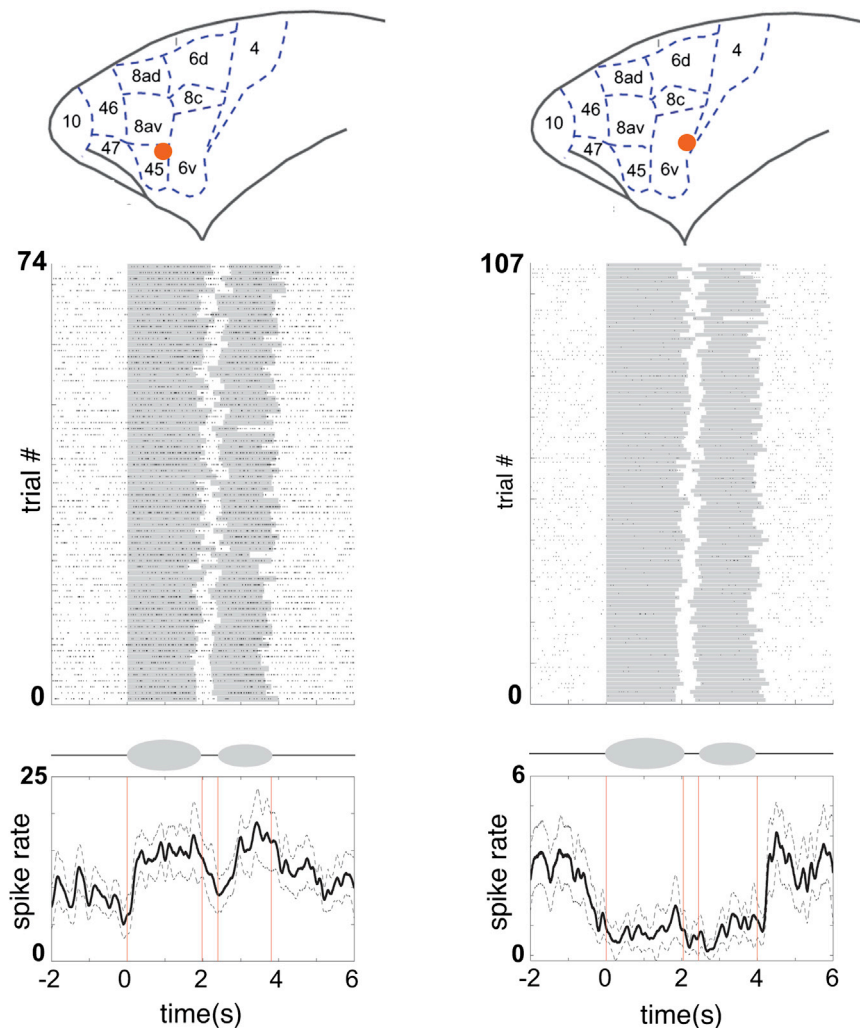
(A) Plots spectrograms of two visually occluded marmosets engaged in an antiphonal conversational exchange. The vocalizations of each individual monkey are shown in the spectrogram shown on each row. A two-pulse Phee call is indicated at the top. (B) Shows an antiphonal conversation between a live marmoset (above) Virtual Marmoset (VM; below). Note that marmosets directly engage VMs similarly to live marmosets. This behavioral paradigm affords the unique opportunity to actively participate in primate social signaling while also maintaining experimental control for explicit tests of social recognition and decision making.

method (Eliades and Wang, 2008b, 2012, 2013). These experiments showed that, despite being generally suppressed during vocal production, individual auditory neurons were more sensitive to deviations in subtle changes to auditory feedback during vocal production than simply hearing the same vocalization played back passively (Eliades and Wang, 2008b). To more explicitly test active social signaling, however, data from animals directly engaged in vocal interactions are necessary. A novel experimental paradigm was developed that involved generating “Virtual Marmosets” (VMs), via a computer-controlled playback system, who directly engage live marmosets in their natural antiphonal calling interaction (Figure 4B). One of the key benefits of this method is that each VM vocal behavior and vocal signal can be systematically manipulated in order to not only directly engage marmosets in their natural vocal interactions but also experimentally test the significance of various social and acoustic cues (Miller et al., 2009a; Miller and Wren Thomas, 2012; Miller and Wang, 2006). This behavioral paradigm was recently used in a neurophysiological study of marmoset prefrontal and premotor cortex (Miller et al., 2015). Previous studies showed vocalization-induced immediate-early gene expression across these areas of marmoset frontal cortex (Miller et al., 2010a; Simões et al., 2010). Neurophysiological recordings during natural antiphonal calling interactions showed that marmoset frontal cortex neurons exhibited motor-related changes in activity both prior to and during vocal production, including populations across ventrolateral premotor and prefrontal regions (Figure 5), such as Area 44 (i.e., a putative Broca’s area homolog). These data contrast with recent studies of rhesus monkeys trained to vocalize in response to a visual stimulus (Coudé et al., 2011; Hage and Nieder, 2013). In each of these studies, not only was

the neural response primarily 500–1,000 ms prior to vocal onset but was also limited to only vocalizations produced in response to the stimulus. Naturally produced vocalizations did not elicit vocal-motor-related neural responses. This is suggestive that vocal production during active communication in marmosets may reveal different dimensions of neural function. This was the first neurophysiological study of active signaling in a primate and serves as a foundation for more sophisticated interactive paradigms (Miller and Wren Thomas, 2012). Neurophysiological recordings using interactive paradigms could determine perceptual boundaries for social and acoustic categories. More broadly, such paradigms can be applied to examine a myriad of sophisticated cognitive mechanisms at play during social signaling (King, 2015; Miller and Bee, 2012) and the role of these behaviors in the broader context of navigating the intricacies of primate societies. This approach offers new avenues of research for marmosets as a model of language. While songbirds have often been cited as a model of language (Doupe and Kuhl, 1999), many of the important insights from that work have centered on sensory-motor learning and motor control (Brainard and Doupe, 2000; Dave and Margoliash, 2000; Long and Fee, 2008; Roberts et al., 2012). The marmoset model offers a complementary approach to study language-related aspects of social communication that are unique to primates and, given the close phylogenetic mechanisms, likely to be supported by common brain mechanisms.

#### **Caveats and Considerations of Natural Behavior**

The use of natural social behaviors in neuroscientific studies has many merits, but they are not without their limitations. One of the great strengths of traditional primate neurophysiological approaches is the ability to rigorously control and study neural function in awake, behaving animals. Subjects are highly trained



**Figure 5. Neural Responses during Natural Vocal Production**

Vocal-motor activity in marmoset frontal cortex neurons during natural vocal production (Miller et al., 2015). Two representative examples of neurons recorded during natural vocal production are shown. A schematic drawing at top shows the anatomical location of each cell in marmoset frontal cortex. Below plots the response during vocal production (Raster and PSTH). Gray bars on each line of the Raster plot the onset and offset of each two-pulse phee, while vertical black lines indicate an action potential. The red vertical lines in the PSTH indicate the average onset and offset of each pulse of the phee.

#### IV. Transgenic Marmosets: Implications for Social Neuropsychiatry

Neuroscience is in the midst of an empirical revolution. The advent of gene-editing techniques has afforded the opportunity to map, manipulate, and record facets of neural function that were not possible only a decade ago (Aston-Jones and Deisseroth, 2013; Tye and Deisseroth, 2012). Many of the most exciting advances from the application of these techniques have come from rodent models, while progress in primates has been more modest (Gerits and Vanduffel, 2013). The recent development of transgenic lines with germline transmission in marmosets (Sasaki et al., 2009) has pushed this species to the forefront of neuroscience as it highlights the prospect of a broader genomic tool kit (Izpisua Belmonte et al., 2015) and

the potential for primate models of human neuropsychiatric and neurodegenerative disease (Okano et al., 2012). While transgenic techniques have been implemented in other primate species, including recent work applying the CRISPR/Cas9 system and Talen-mediated gene editing in rhesus monkeys (Kang et al., 2015; Niu et al., 2014; Wan et al., 2015), it is the characteristics of marmoset reproductive biology that make the species particularly attractive for developing a broad range of transgenic disease models. Because of the short gestation (~140 days) and natural propensity to produce multiple offspring at each birth (Tardif et al., 2003) in marmosets, for example, a large population of a particular transgenic line could be generated relatively quickly. Though it should be noted that genetic chimerism of paternal twins may present certain challenges (Ross et al., 2007). The lissencephalic (i.e., smooth) cortical surface of the marmoset brain provides a different advantage for transgenic lines expressing genetically encoded calcium indicator (GECI) molecules (Broussard et al., 2014), such as GCaMP, or opsin molecules (Emiliani et al., 2015), that allow cell-specific control of neural activity. Because nearly all areas of the brain are accessible directly under the skull,

to perform a regimented task in which many of the factors that may modulate neural activity are controlled. This approach allows for the precise measurement of repeatable stimulus classes. This degree of control is not possible in freely moving, naturally behaving animals. Exactly how the inherent variability in social behaviors affects the various endogenous and exogenous factors that modulate neural activity in primate neocortex is not known. For example, the differences reported in ventrolateral prefrontal cortex responses to vocalizations in freely moving marmosets (Miller et al., 2015) and restrained rhesus monkeys (Gifford et al., 2005; Romanski et al., 2005), in which neurons are driven by the acoustic stimuli, may relate to these very issues. While clearly the brain is able to function without the need to control for these factors, the sources of variance also confound our ability to test and parse their relative contributions to neural function. Ultimately, progress on this front necessitates a balance of these issues. Our selection of gaze following and antiphonal calling as examples of how to pursue these issues was to highlight the opportunity to examine facets of natural primate social behaviors, while also maintaining some degree of experimental control.



optical imaging and activation methods can be implemented more effectively in marmosets than in many other primates. There is untold potential for transgenic marmosets in many areas, but as outlined above, their behavioral biology lends itself particularly well to experiments in the social domain. The types of behavioral paradigms discussed in the previous section would provide unique avenues to phenotype these primates following gene insertions and deletions in disease models, while modern optical imaging and activation methods could be aptly applied to studies of social circuits in the marmoset brain.

Primates are social animals with many attributes specific to our Order. Neuropsychiatric disorders that affect our ability to function in the social domain are immensely damaging. Autism Spectrum Disorder (ASD), for example, is a neurodevelopmental disorder that can manifest in different ways but individuals typically exhibit a range of deficits in social interaction and communication (Frith and Happé, 2005). Many humans on the ASD exhibit clear deficits in social signaling, such as avoiding looking at faces and eyes (Grice et al., 2005; Jones and Klin, 2013) and language impairments (Bartak et al., 1975; Charman et al., 2003). Because of ASD's prevalence and debilitating effects, extensive efforts have been made to understand the underlying causes. Recent advances in genomics have begun to identify the numerous genes that may underlie ASD (Abrahams and Geschwind, 2008), such as *Shank3* (Durand et al., 2007; Moessner et al., 2007). Deletions of the *Shank3* gene in mice results in anomalous social behavior (Duffney et al., 2015; Peça et al., 2011). Notably, the changes in mouse social behavior are typically characterized by the avoidance of, or reduction in time interacting with, conspecifics and atypical patterns of social interactions. Although these broad behavioral changes are often symptomatic of ASD, they certainly do not capture the breadth of social deficits evident in humans as discussed above. While mice and humans do exhibit some similarities as a result of their shared mammalian heritage, much has obviously changed in the evolution of each taxa's brain and behavior since they diverged 100 million years ago (Shultz et al., 2011). Deletion of *Shank3* in a primate may also impact primate social behaviors, but in ways that are notably distinct from other mammals. A primate model is critical to further explicating the genetic basis of ASD. Due to the broad experimental techniques available to study the neurobiology and behavior of marmoset social interactions, a *Shank3* marmoset model would be able to diagnose not only general changes to social behavior in these animals but also key deviations in primate-specific social signaling and behavior (e.g., eye gaze, coordinated vocal interactions, etc.) using some of the behavioral paradigms discussed above. Furthermore, because the functional neuroanatomy of the primate brain has been conserved, changes in the behavioral phenotype following genetic manipulations would more likely have a similar impact on the underlying neural circuits across all species in our Order than may be expected with a rodent model (Kaiser and Feng, 2015). The ability to identify the interaction between genes, neurons, and behavior represents a powerful approach to explicating the mechanisms underlying neuropsychiatric disorders in the primate brain.

## V. Conclusions

Here we argued that the greatest value of marmosets in neuroscience is as a model of the neural circuitry underlying social behavior and its disorders. Certainly, the marmoset model is more broadly applicable to several other areas of neuroscience research (Fox et al., 2010; Mitchell and Leopold, 2015; Philippen et al., 2010; Roberts and Wallis, 2000). However, facets of the species behavioral biology, such as small size, rich social signaling systems, and cooperative society, as well as the broader array of neural recording techniques possible in this species, make them particularly amenable to questions about sociality.

As with any research model organism, the marmoset is not without its limitations, some examples of which have been addressed previously (Mitchell and Leopold, 2015). Two often voiced shortcomings of the marmoset are that, first, the phylogenetic separation from humans is too great, and second, that the lissencephalic brain is simply too different to allow for comparison with humans. These concerns have some degree of validity, though they are often overstated. Humans' common ancestor with New World monkeys lived about ten million years earlier than its common ancestor with rhesus monkeys (Figure 1). Extensive comparative studies in primate species have shown that this phylogenetic separation alone is unlikely to account for large differences in the brain, since anthropoid primates (i.e., monkeys and apes) have a very similar constellation of brain areas (Kaas, 2013). Whether there are subtler differences in the brain that endowed the clade of Old World monkeys with cognitive abilities absent in New World monkeys remains to be demonstrated. At the same time, it must be said that the marmoset, in being one of the smallest anthropoid primates, also has one of the smallest brains. It is the absolute brain size, rather than the lissencephaly per se, that may shape aspects of marmoset cognition and behavior in a direction opposite to that of humans, who possess the largest primate brain (Mitchell and Leopold, 2015).

Most knowledge about the primate brain derives from the rhesus monkey, with findings from this work shaping our conception of the human brain, as well as our interpretation of direct measurement of human brain activity via fMRI (Alexander et al., 1986; Connor et al., 2007; Desimone et al., 1984; Felleman and Van Essen, 1991; Gold and Shadlen, 2007; Middleton and Strick, 1994; Romo and de Lafuente, 2013; Romo et al., 2004; Salzman et al., 1990; Tsao et al., 2006; Tsao and Livingstone, 2008; Tsao et al., 2008; Tsunada et al., 2016; Ungerleider and Mishkin, 1982). That the marmoset differs in some ways from the rhesus should be taken as an advantage, rather than a disadvantage. The two species offer complementary perspectives on our primate brain, which can be well directed to studying some of the most personal and fascinating aspects of human cognition.

The types of active social signaling paradigms highlighted in this manuscript represent a potentially powerful approach for which the marmoset is particularly well suited, but they are by no means the only ones that are likely to be fruitful. Since marmosets display a similarly flexible pattern of sociosexual behavior as humans (Buss and Schmitt, 1993; Cavanaugh et al., 2014, 2015), continued research on the neurochemical basis of social attachment and recognition in marmosets (Cavanaugh et al., 2014,

2015; Mustoe et al., 2015; Smith et al., 2010), for example, provides direct comparisons to many analogous studies in rodents discussed earlier on this topic and offers the opportunity to identify shared and derived features of these core mammalian social behavioral systems in primates. Furthermore, marmoset active social signaling paradigms represent potential models for understanding the neural mechanisms underlying facets of language, in particular the intricate interplay between social communication and social cognition. This would include, but not be limited to, modeling social monitoring, recognition, and decision making. Like transgenic marmoset models, the application of modern molecular techniques using viruses (Watakabe et al., 2015), such as two-photon calcium imaging (Sadakane et al., 2015) and optogenetics, to studies of the marmoset brain are able to build on the richness of marmoset social behaviors and existing experimental paradigms to explicate the underlying functional neural circuitry. While much work remains, we anticipate that a marmoset model of human social behavior is uniquely suited as a powerful approach to expand the frontiers of Neuroscience.

#### AUTHOR CONTRIBUTIONS

All authors contributed to the discussion, writing and editing of the manuscript. W.A.F., D.A.L., J.F.M., A.C.S., and X.W. are listed alphabetically. C.T.M. is the corresponding author.

#### ACKNOWLEDGMENTS

We thank Ed Connor, Nicho Hatsopoulos, Eric Knudsen, and Jitendra Sharma for helpful comments on previous versions of this manuscript. C.T.M. was supported by grants from the NIH (R01 DC012087 and R21 MH104756) and N.S.F. (IDBR 1254309). V.A.F. was supported by The Simons Collaboration on the Global Brain, NSF (INSPIRE Track 2 DBI-1343174), and the New York Stem Cell Foundation. D.A.L. was supported (in part) by the Intramural Research Program of the NIMH under ZIA MH002898 and ZIA MH002838. J.F.M. was supported by grants from the NIH (R21 MH104756, U01 NS094330). A.C.S. was supported by the Intramural Research Program of the NIH, NINDS. X.W. was supported by grants from the NIH (R01 DC03180 and R01 DC005808).

#### REFERENCES

- Abbott, D.H. (1984). Behavioral and physiological suppression of fertility in subordinate marmoset monkeys. *Am. J. Primatol.* **6**, 169–186.
- Abbott, D.H., Saltzman, W., Schutz-Darken, N.J., and Smith, T.E. (1997). Specific neuroendocrine mechanisms not involving generalized stress mediate social regulation of female reproduction in cooperative breeding marmoset monkeys. In *The Integrative Neurobiology of Affiliation*, C.S. Carver, B. Kirkpatrick, and L.L. Lederhendler, eds. (Annals of the New York Academy of Sciences), pp. 219–238.
- Abrahams, B.S., and Geschwind, D.H. (2008). Advances in autism genetics: on the threshold of a new neurobiology. *Nat. Rev. Genet.* **9**, 341–355.
- Adolphs, R. (2009). The social brain: neural basis of social knowledge. *Annu. Rev. Psychol.* **60**, 693–716.
- Agamaite, J.A., Chang, C.J., Osmanski, M.S., and Wang, X. (2015). A quantitative acoustic analysis of the vocal repertoire of the common marmoset (*Callithrix jacchus*). *J. Acoust. Soc. Am.* **138**, 2906–2928.
- Alexander, G.E., DeLong, M.R., and Strick, P.L. (1986). Parallel organization of functionally segregated circuits linking basal ganglia and cortex. *Annu. Rev. Neurosci.* **9**, 357–381.
- Allman, J.M. (1977). Evolution of the visual system in early primates. In *Psychobiology and Physiological Psychology*, J.M. Sprague and A.M. Epstein, eds. (Academic Press), pp. 1–53.
- Arakawa, H., Blanchard, D.C., Arakawa, K., Dunlap, C., and Blanchard, R.J. (2008). Scent marking behavior as an odorant communication in mice. *Neurosci. Biobehav. Rev.* **32**, 1236–1248.
- Arriaga, G., and Jarvis, E.D. (2013). Mouse vocal communication system: are ultrasounds learned or innate? *Brain Lang.* **124**, 96–116.
- Aston-Jones, G., and Deisseroth, K. (2013). Recent advances in optogenetics and pharmacogenetics. *Brain Res.* **1511**, 1–5.
- Azzi, J.C.B., Sirigu, A., and Duhamel, J.R. (2012). Modulation of value representation by social context in the primate orbitofrontal cortex. *Proc. Natl. Acad. Sci. USA* **109**, 2126–2131.
- Barnett, S.A. (1958). An analysis of social behaviour in wild rats. *Proc. Zool. Soc. Lond.* **130**, 107–152.
- Barros, M., Boere, V., Mello, E.L., and Tomaz, C. (2002). Reactions to potential predators in captive-born marmosets (*Callithrix penicillata*). *Int. J. Primatol.* **23**, 443–454.
- Bartak, L., Rutter, M., and Cox, A. (1975). A comparative study of infantile autism and specific development receptive language disorder. I. The children. *Br. J. Psychiatry* **126**, 127–145.
- Barton, R.A., and Dunbar, R.I.M. (1997). Evolution of the social brain. In *Machiavellian Intelligence 2*, A. Whiten and R. Byrne, eds. (Cambridge University Press), pp. 240–263.
- Beery, A.K., and Kaufer, D. (2015). Stress, social behavior, and resilience: insights from rodents. *Neurobiol. Stress* **1**, 116–127.
- Ben-Ami Bartal, I., Decety, J., and Mason, P. (2011). Empathy and pro-social behavior in rats. *Science* **334**, 1427–1430.
- Bendor, D., and Wang, X. (2005). The neuronal representation of pitch in primate auditory cortex. *Nature* **436**, 1161–1165.
- Bezerra, B.M., and Souto, A. (2008). Structure and usage of the vocal repertoire of *Callithrix jacchus*. *Int. J. Primatol.* **29**, 671–701.
- Blumstein, D.T. (2013). Yellow-bellied marmosets: insights from an emergent view of sociality. *Philos. Trans. R. Soc. Lond. B Biol. Sci.* **368**, 20120349.
- Bobrov, E., Wolfe, J., Rao, R.P., and Brecht, M. (2014). The representation of social facial touch in rat barrel cortex. *Curr. Biol.* **24**, 109–115.
- Bradbury, J.W., and Vehrencamp, S.L. (2011). *Principles of Animal Communication*, 2 edn (Sinauer Associates).
- Brainard, M.S., and Doupe, A.J. (2000). Auditory feedback in learning and maintenance of vocal behaviour. *Nat. Rev. Neurosci.* **1**, 31–40.
- Brecht, M. (2007). Barrel cortex and whisker-mediated behaviors. *Curr. Opin. Neurobiol.* **17**, 408–416.
- Broussard, G.J., Liang, R., and Tian, L. (2014). Monitoring activity in neural circuits with genetically encoded indicators. *Front. Mol. Neurosci.* **7**, 97.
- Bruner, J.S. (1975). The ontogenesis of speech acts. *J. Child Lang.* **2**, 1–19.
- Bugnyar, T., and Huber, L. (1997). Push or pull: an experimental study on imitation in marmosets. *Anim. Behav.* **54**, 817–831.
- Burkart, J., and Heschl, A. (2006). Geometrical gaze following in common marmosets (*Callithrix jacchus*). *J. Comp. Psychol.* **120**, 120–130.
- Burkart, J.M., and van Schaik, C.P. (2010). Cognitive consequences of cooperative breeding in primates? *Anim. Cogn.* **13**, 1–19.
- Burkart, J.M., Fehr, E., Efferson, C., and van Schaik, C.P. (2007). Other-regarding preferences in a non-human primate: common marmosets provision food altruistically. *Proc. Natl. Acad. Sci. USA* **104**, 19762–19766.
- Burkart, J.M., Hrdy, S.B., and van Schaik, C.P. (2009a). Cooperative breeding and human cognitive evolution. *Evol. Anthropol.* **18**, 175–186.
- Burkart, J.M., Strasser, A., and Foglia, M. (2009b). Trade-offs between social learning and individual innovativeness in common marmosets, *Callithrix jacchus*. *Anim. Behav.* **77**, 1291–1301.

- Buss, D.M., and Schmitt, D.P. (1993). Sexual strategies theory: an evolutionary perspective on human mating. *Psychol. Rev.* *100*, 204–232.
- Byrne, R.W., and Bates, L.A. (2010). Primate social cognition: uniquely primate, uniquely social, or just unique? *Neuron* *65*, 815–830.
- Byrne, R.W., and Whiten, A. (1989). *Machiavellian Intelligence: Social Expertise and the Evolution of Intellect in Monkeys, Apes and Humans* (Oxford University Press).
- Caldwell, H.K., Lee, H.J., Macbeth, A.H., and Young, W.S., 3rd (2008). Vasopressin: behavioral roles of an “original” neuropeptide. *Prog. Neurobiol.* *84*, 1–24.
- Carey, S., and Diamond, R. (1994). Are faces perceived as configurations more by adults than by children? *Vis. Cogn.* *1*, 253–274.
- Cavanaugh, J., Mustoe, A.C., Taylor, J.H., and French, J.A. (2014). Oxytocin facilitates fidelity in well-established marmoset pairs by reducing sociosexual behavior toward opposite-sex strangers. *Psychoneuroendocrinology* *49*, 1–10.
- Cavanaugh, J., Huffman, M.C., Harnisch, A.M., and French, J.A. (2015). Marmosets treated with oxytocin are more socially attractive to their long-term mate. *Front. Behav. Neurosci.* *9*, 251.
- Chang, S.W., Winecoff, A.A., and Platt, M.L. (2011). Vicarious reinforcement in rhesus macaques (*macaca mulatta*). *Front. Neurosci.* *5*, 27.
- Chang, S.W., Gariépy, J.F., and Platt, M.L. (2013). Neuronal reference frames for social decisions in primate frontal cortex. *Nat. Neurosci.* *16*, 243–250.
- Chaplin, T.A., Yu, H.H., Soares, J.G., Gattass, R., and Rosa, M.G.P. (2013). A conserved pattern of differential expansion of cortical areas in simian primates. *J. Neurosci.* *33*, 15120–15125.
- Charman, T., Baron-Cohen, S., Swettenham, J., Baird, G., Drew, A., and Cox, A. (2003). Predicting language outcome in infants with autism and pervasive developmental disorder. *Int. J. Lang. Commun. Disord.* *38*, 265–285.
- Chen, H.C., Kaplan, G., and Rogers, L.J. (2009). Contact calls of common marmosets (*Callithrix jacchus*): influence of age of caller on antiphonal calling and other vocal responses. *Am. J. Primatol.* *71*, 165–170.
- Cheney, D.L., and Seyfarth, R.M. (1990). *How Monkeys See the World: Inside the Mind of Another Species* (Chicago University Press).
- Cheney, D.L., and Seyfarth, R.M. (2007). *Baboon Metaphysics: The Evolution of a Social Mind* (University of Chicago Press).
- Cheney, D.L., Seyfarth, R.M., and Silk, J.B. (1995). The responses of female baboons (*Papio cynocephalus ursinus*) to anomalous social interactions: evidence for causal reasoning? *J. Comp. Psychol.* *109*, 134–141.
- Chow, C.P., Mitchell, J.F., and Miller, C.T. (2015). Vocal turn-taking in a non-human primate is learned during ontogeny. *Proc. Biol. Sci.* *282*, 20150069.
- Clara, E., Tommasi, L., and Rogers, L.J. (2008). Social mobbing calls in common marmosets (*Callithrix jacchus*): effects of experience and associated cortisol levels. *Anim. Cogn.* *11*, 349–358.
- Connor, C.E., Brincat, S.L., and Pasupathy, A. (2007). Transformation of shape information in the ventral pathway. *Curr. Opin. Neurobiol.* *17*, 140–147.
- Coudé, G., Ferrari, P.F., Rodà, F., Maranesi, M., Borelli, E., Veroni, V., Monti, F., Rozzi, S., and Fogassi, L. (2011). Neurons controlling voluntary vocalization in the macaque ventral premotor cortex. *PLoS ONE* *6*, e26822.
- Crook, J.H., Ellis, J.E., and Goss-Custard, J.D. (1976). *Mammalian Social Systems: Structure and Function*. *Anim. Behav.* *24*, 261–274.
- Dave, A.S., and Margoliash, D. (2000). Song replay during sleep and computational rules for sensorimotor vocal learning. *Science* *290*, 812–816.
- Day, R.L., Coe, R.L., Kendal, J.R., and Laland, K.N. (2003). Neophilia, innovation and social learning: A study of intergeneric differences in callitrichid monkeys. *Anim. Behav.* *65*, 559–571.
- de Boer, R.A., Overduin-de Vries, A.M., Louwerse, A.L., and Sterck, E.H.M. (2013). The behavioral context of visual displays in common marmosets (*Callithrix jacchus*). *Am. J. Primatol.* *75*, 1084–1095.
- de la Mothe, L.A., Blumell, S., Kajikawa, Y., and Hackett, T.A. (2006). Cortical connections of the auditory cortex in marmoset monkeys: core and medial belt regions. *J. Comp. Neurol.* *496*, 27–71.
- de la Mothe, L.A., Blumell, S., Kajikawa, Y., and Hackett, T.A. (2012). Cortical connections of auditory cortex in marmoset monkeys: lateral belt and parabelt regions. *Anat. Rec. (Hoboken)* *295*, 800–821.
- Deaner, R.O., Khara, A.V., and Platt, M.L. (2005). Monkeys pay per view: adaptive valuation of social images by rhesus macaques. *Curr. Biol.* *15*, 543–548.
- Deisseroth, K. (2011). Optogenetics. *Nat. Methods* *8*, 26–29.
- Desimone, R., Albright, T.D., Gross, C.G., and Bruce, C. (1984). Stimulus-selective properties of inferior temporal neurons in the macaque. *J. Neurosci.* *4*, 2051–2062.
- Digby, L.J. (1995). Social organization in a wild population of *Callithrix jacchus*. Part 2: Intragroup social behavior. *Primates* *36*, 361–375.
- Digby, L.J., and Barreto, C.E. (1993). Social organization in a wild population of *Callithrix jacchus*. I. Group composition and dynamics. *Folia Primatol. (Basel)* *61*, 123–134.
- Doupe, A.J., and Kuhl, P.K. (1999). Birdsong and human speech: common themes and mechanisms. *Annu. Rev. Neurosci.* *22*, 567–631.
- Dudek, S.M., Alexander, G.M., and Farris, S. (2016). Rediscovering area CA2: unique properties and functions. *Nat. Rev. Neurosci.* *17*, 89–102.
- Duffney, L.J., Zhong, P., Wei, J., Matas, E., Cheng, J., Qin, L., Ma, K., Dietz, D.M., Kajiwara, Y., Buxbaum, J.D., and Yan, Z. (2015). Autism-like deficits in SHANK3-deficient mice are rescued by targeting Actin regulators. *Cell Rep.* *11*, 1400–1413.
- Dunbar, R.I.M. (2003). The social brain: Mind, language and society in evolutionary perspective. *Annu. Rev. Anthropol.* *32*, 163–181.
- Durand, C.M., Betancur, C., Boeckers, T.M., Bockmann, J., Chaste, P., Fauchereau, F., Nygren, G., Rastam, M., Gillberg, I.C., Anckarsäter, H., et al. (2007). Mutations in the gene encoding the synaptic scaffolding protein SHANK3 are associated with autism spectrum disorders. *Nat. Genet.* *39*, 25–27.
- Eliades, S.J., and Wang, X. (2008a). Chronic multi-electrode neural recording in free-roaming monkeys. *J. Neurosci. Methods* *172*, 201–214.
- Eliades, S.J., and Wang, X. (2008b). Neural substrates of vocalization feedback monitoring in primate auditory cortex. *Nature* *453*, 1102–1106.
- Eliades, S.J., and Wang, X. (2012). Neural correlates of the lombard effect in primate auditory cortex. *J. Neurosci.* *32*, 10737–10748.
- Eliades, S.J., and Wang, X. (2013). Comparison of auditory-vocal interactions across multiple types of vocalizations in marmoset auditory cortex. *J. Neurophysiol.* *109*, 1638–1657.
- Emes, R.D., Goodstadt, L., Winter, E.E., and Ponting, C.P. (2003). Comparison of the genomes of human and mouse lays the foundation of genome zoology. *Hum. Mol. Genet.* *12*, 701–709.
- Emiliani, V., Cohen, A.E., Deisseroth, K., and Häusser, M. (2015). All-Optical Interrogation of Neural Circuits. *J. Neurosci.* *35*, 13917–13926.
- Engh, A.L., Hoffeier, R.R., Cheney, D.L., and Seyfarth, R.M. (2006). Who, me? Can baboons infer the target of vocalizations? *Anim. Behav.* *71*, 381–387.
- Epple, G. (1968). Comparative studies on vocalization in marmoset monkeys (*Hapalidae*). *Folia Primatol. (Basel)* *8*, 1–40.
- Epple, G. (1975). The behavior of marmoset monkeys (*Callithricidae*). In *Primate Behavior: Developments in Field and Laboratory Research*, Volume 4, L.A. Rosenblum, ed. (Academic Press), pp. 195–239.
- Faroni, T., Csibra, G., Simion, F., and Johnson, M.H. (2002). Eye contact detection in humans from birth. *Proc. Natl. Acad. Sci. USA* *99*, 9602–9605.
- Faroni, T., Mansfield, E.M., Lai, C., and Johnson, M.H. (2003). Infants perceiving and acting on the eyes: tests of an evolutionary hypothesis. *J. Exp. Child Psychol.* *85*, 199–212.

- Feldman, R. (2012). Oxytocin and social affiliation in humans. *Horm. Behav.* *61*, 380–391.
- Feldman, R., Monakhov, M., Pratt, M., and Ebstein, R.P. (2016). Oxytocin pathway genes: Evolutionary ancestor system impacting on human affiliation, sociality and psychopathology. *Biol. Psychiatry* *79*, 174–184.
- Felleman, D.J., and Van Essen, D.C. (1991). Distributed hierarchical processing in the primate cerebral cortex. *Cereb. Cortex* *1*, 1–47.
- Ferguson, J.N., Young, L.J., Hearn, E.F., Matzuk, M.M., Insel, T.R., and Winslow, J.T. (2000). Social amnesia in mice lacking the oxytocin gene. *Nat. Genet.* *25*, 284–288.
- Ferrari, S.F., and Ferrari, M.A.L. (1990). Predator avoidance behaviour in the buffy-headed marmoset. *Callithrix flaviceps*. *Primates* *37*, 323–338.
- Fisher, C., and Freiwald, W.A. (2015a). Contrasting specializations for facial motion within the macaque face-processing system. *Curr. Biol.* *25*, 261–266.
- Fisher, C., and Freiwald, W.A. (2015b). Whole-agent selectivity within the macaque face-processing system. *Proc. Natl. Acad. Sci. USA* *112*, 14717–14722.
- Fitch, W.T., Huber, L., and Bugnyar, T. (2010). Social cognition and the evolution of language: constructing cognitive phylogenies. *Neuron* *65*, 795–814.
- Flombaum, J.I., and Santos, L.R. (2005). Rhesus monkeys attribute perceptions to others. *Curr. Biol.* *15*, 447–452.
- Flusberg, B.A., Nimmerjahn, A., Cocker, E.D., Mukamel, E.A., Barretto, R.P.J., Ko, T.H., Burns, L.D., Jung, J.C., and Schnitzer, M.J. (2008). High-speed, miniaturized fluorescence microscopy in freely moving mice. *Nat. Methods* *5*, 935–938.
- Fox, S.H., Visanji, N., Reyes, G., Huot, P., Gomez-Ramirez, J., Johnston, T., and Brotchie, J.M. (2010). Neuropsychiatric behaviors in the MPTP marmoset model of Parkinson's disease. *Can. J. Neurol. Sci.* *37*, 86–95.
- Freiwald, W.A., and Tsao, D.Y. (2010). Functional compartmentalization and viewpoint generalization within the macaque face-processing system. *Science* *330*, 845–851.
- French, J.A. (1997). Proximate regulation of singular breeding in callitrichid primates. In *Cooperative Breeding in Mammals*, N. Solomon and J.A. French, eds. (Cambridge University Press), pp. 34–75.
- Fridlund, A. (1994). *Human Facial Expressions: An Evolutionary Perspective* (Academic Press).
- Frith, C.D., and Frith, U. (1999). Interacting minds—a biological basis. *Science* *286*, 1692–1695.
- Frith, U., and Happé, F. (2005). Autism spectrum disorder. *Curr. Biol.* *15*, R786–R790.
- Fritsches, K.A., and Rosa, M.G.P. (1996). Visuotopic organization of striate cortex in the marmoset monkey (*Callithrix jacchus*). *J. Comp. Neurol.* *372*, 264–282.
- Galef, B.G.J., Jr., and Kennett, D.J. (1987). Different mechanisms for social transmission of diet preference in rat pups of different ages. *Dev. Psychobiol.* *20*, 209–215.
- Gariépy, J.F., Watson, K.K., Du, E., Xie, D.L., Erb, J., Amasino, D., and Platt, M.L. (2014). Social learning in humans and other animals. *Front. Neurosci.* *8*, 58.
- Gerits, A., and Vanduffel, W. (2013). Optogenetics in primates: a shining future? *Trends Genet.* *29*, 403–411.
- Ghazanfar, A.A., and Santos, L.R. (2004). Primate brains in the wild: the sensory bases for social interactions. *Nat. Rev. Neurosci.* *5*, 603–616.
- Gifford, G.W., 3rd, MacLean, K.A., Hauser, M.D., and Cohen, Y.E. (2005). The neurophysiology of functionally meaningful categories: macaque ventrolateral prefrontal cortex plays a critical role in spontaneous categorization of species-specific vocalizations. *J. Cogn. Neurosci.* *17*, 1471–1482.
- Gold, J.I., and Shadlen, M.N. (2007). The neural basis of decision making. *Annu. Rev. Neurosci.* *30*, 535–574.
- Gómez, J.C. (2005). Species comparative studies and cognitive development. *Trends Cogn. Sci.* *9*, 118–125.
- Gothard, K.M., Battaglia, F.P., Erickson, C.A., Spitzer, K.M., and Amaral, D.G. (2007). Neural responses to facial expression and face identity in the monkey amygdala. *J. Neurophysiol.* *97*, 1671–1683.
- Grant, E.C. (1963). An analysis of the social behaviour of the male laboratory rat. *Behaviour* *21*, 260–281.
- Grice, S.J., Halit, H., Farroni, T., Baron-Cohen, S., Bolton, P., and Johnson, M.H. (2005). Neural correlates of eye-gaze detection in young children with autism. *Cortex* *41*, 342–353.
- Gunaydin, L.A., Grosenick, L., Finkelstein, J.C., Kauvar, I.V., Fenno, L.E., Adhikari, A., Lammel, S., Mirzabekov, J.J., Airan, R.D., Zalocusky, K.A., et al. (2014). Natural neural projection dynamics underlying social behavior. *Cell* *157*, 1535–1551.
- Hage, S.R., and Nieder, A. (2013). Single neurons in monkey prefrontal cortex encode volitional initiation of vocalizations. *Nat. Commun.* *4*, 2409, <http://dx.doi.org/10.1038/ncomms3409>.
- Hare, B., Call, J., and Tomasello, M. (2001). Do chimpanzees know what conspecifics know? *Anim. Behav.* *61*, 139–151.
- Hare, B., Call, J., and Tomasello, M. (2006). Chimpanzees deceive a human competitor by hiding. *Cognition* *101*, 495–514.
- Hare, B., Melis, A.P., Woods, V., Hastings, S., and Wrangham, R. (2007). Tolerance allows bonobos to outperform chimpanzees on a cooperative task. *Curr. Biol.* *17*, 619–623.
- Haroush, K., and Williams, Z.M. (2015). Neuronal prediction of opponent's behavior during cooperative social interchange in primates. *Cell* *160*, 1233–1245.
- Hasson, U., Ghazanfar, A.A., Galantucci, B., Garrod, S., and Keysers, C. (2012). Brain-to-brain coupling: a mechanism for creating and sharing a social world. *Trends Cogn. Sci.* *16*, 114–121.
- Hecht, E.E., Patterson, R., and Barbey, A.K. (2012). What can other animals tell us about human social cognition? An evolutionary perspective on reflective and reflexive processing. *Front. Hum. Neurosci.* *6*, 224.
- Heiney, S.A., and Blazquez, P.M. (2011). Behavioral responses of trained squirrel and rhesus monkeys during oculomotor tasks. *Exp. Brain Res.* *212*, 409–416.
- Heinrich, B. (2011). Conflict, Cooperation and Cognition in the Common Raven. *Adv. Stud. Behav.* *43*, 189–238.
- Helmchen, F., Fee, M.S., Tank, D.W., and Denk, W. (2001). A miniature head-mounted two-photon microscope. high-resolution brain imaging in freely moving animals. *Neuron* *31*, 903–912.
- Herba, C., and Phillips, M. (2004). Annotation: Development of facial expression recognition from childhood to adolescence: behavioural and neurological perspectives. *J. Child Psychol. Psychiatry* *45*, 1185–1198.
- Hitti, F.L., and Siegelbaum, S.A. (2014). The hippocampal CA2 region is essential for social memory. *Nature* *508*, 88–92.
- Hofer, H., and East, M.L. (1993). The commuting system of Serengeti spotted hyaenas: How a predator copes with migratory prey. I. Social Organization. *Anim. Behav.* *46*, 547–557.
- Hoffman, E.A., and Haxby, J.V. (2000). Distinct representations of eye gaze and identity in the distributed human neural system for face perception. *Nat. Neurosci.* *3*, 80–84.
- Hoffman, K.L., Gothard, K.M., Schmid, M.C., and Logothetis, N.K. (2007). Facial-expression and gaze-selective responses in the monkey amygdala. *Curr. Biol.* *17*, 766–772.
- Huber, L., and Voelkl, B. (2009). Social and physical cognition in marmosets and tamarins. In *The Smallest Anthropoids: The Marmoset/Callimico Radiation*, S.M. Ford, L.M. Porter, and L.C. Davis, eds. (Springer Verlag), pp. 183–201.
- Hung, C.C., Yen, C.C., Ciuchta, J.L., Papoti, D., Bock, N.A., Leopold, D.A., and Silva, A.C. (2015). Functional mapping of face-selective regions in the extrastriate visual cortex of the marmoset. *J. Neurosci.* *35*, 1160–1172.

- Insel, T.R., and Young, L.J. (2001). The neurobiology of attachment. *Nat. Rev. Neurosci.* *2*, 129–136.
- Izpisua Belmonte, J.C., Callaway, E.M., Caddick, S.J., Churchland, P., Feng, G., Homanics, G.E., Lee, K.F., Leopold, D.A., Miller, C.T., Mitchell, J.F., et al. (2015). Brains, genes, and primates. *Neuron* *86*, 617–631.
- Johnston, R.E. (2003). Chemical communication in rodents: From pheromones to individual recognition. *J. Mammal.* *84*, 1141–1162.
- Jones, W., and Klin, A. (2013). Attention to eyes is present but in decline in 2–6-month-old infants later diagnosed with autism. *Nature* *504*, 427–431.
- Kaas, J.H. (2013). The evolution of brains from early mammals to humans. *Wiley Interdiscip. Rev. Cogn. Sci.* *4*, 33–45.
- Kaiser, T., and Feng, G. (2015). Modeling psychiatric disorders for developing effective treatments. *Nat. Med.* *21*, 979–988.
- Kang, Y., Zheng, B., Shen, B., Chen, Y., Wang, L., Wang, J., Niu, Y., Cui, Y., Zhou, J., Wang, H., et al. (2015). CRISPR/Cas9-mediated Dax1 knockout in the monkey recapitulates human AHC-HH. *Hum. Mol. Genet.* *24*, 7255–7264.
- Kanwisher, N., McDermott, J., and Chun, M.M. (1997). The fusiform face area: a module in human extrastriate cortex specialized for face perception. *J. Neurosci.* *17*, 4302–4311.
- Kemp, C., and Kaplan, G. (2013). Facial expressions in common marmosets (*Callithrix jacchus*) and their use by conspecifics. *Anim. Cogn.* *16*, 773–788.
- Kennedy, D.P., and Adolphs, R. (2012). The social brain in psychiatric and neurological disorders. *Trends Cogn. Sci.* *16*, 559–572.
- King, S.L. (2015). You talkin' to me? Interactive playback is a powerful yet underused tool in animal communication research. *Biol. Lett.* *11*, 20150403.
- Klein, J.T., Deaner, R.O., and Platt, M.L. (2008). Neural correlates of social target value in macaque parietal cortex. *Curr. Biol.* *18*, 419–424.
- Kosfeld, M., Heinrichs, M., Zak, P.J., Fischbacher, U., and Fehr, E. (2005). Oxytocin increases trust in humans. *Nature* *435*, 673–676.
- Laland, K.N., and Plotkin, H.C. (1993). Social transmission of food preferences among Norway rats by marking of food sites and by gustatory contact. *Anim. Learn. Behav.* *21*, 35–41.
- Lazaro-Perea, C., Snowdon, C.T., and de Fatima Arruda, M. (1999). Scent-marking behavior in wild groups of common marmosets. *Behav. Ecol. Sociobiol.* *46*, 313–324.
- Lazaro-Perea, C., DE Fátima Arruda, M., and Snowdon, C.T. (2004). Grooming as a reward? Social function of grooming between females in cooperatively breeding marmosets. *Anim. Behav.* *67*, 627–636.
- le Roux, A., Snyder-Mackler, N., Roberts, E.K., Beehner, J.C., and Bergman, T.J. (2013). Evidence for tactical concealment in a wild primate. *Nat. Commun.* *4*, 1462.
- Lee, D. (2010). Neuroethology of Decision Making. In *Primate Neuroethology*, M. Platt and A.A. Ghazanfar, eds. (Oxford University Press), pp. 550–569.
- Leopold, D.A., and Rhodes, G. (2010). A comparative view of face perception. *J. Comp. Psychol.* *124*, 233–251.
- Leopold, D.A., Bondar, I.V., and Giese, M.A. (2006). Norm-based face encoding by single neurons in the monkey inferotemporal cortex. *Nature* *442*, 572–575.
- Li, W.H., Gouy, M., Sharp, P.M., O'hUigin, C., and Yang, Y.W. (1990). Molecular phylogeny of Rodentia, Lagomorpha, Primates, Artiodactyla, and Carnivora and molecular clocks. *Proc. Natl. Acad. Sci. USA* *87*, 6703–6707.
- Lin, D.Y., Zhang, S.Z., Block, E., and Katz, L.C. (2005). Encoding social signals in the mouse main olfactory bulb. *Nature* *434*, 470–477.
- Long, M.A., and Fee, M.S. (2008). Using temperature to analyse temporal dynamics in the songbird motor pathway. *Nature* *456*, 189–194.
- Madden, J.R., Drewe, J.A., Pearce, G.P., and Clutton-Brock, T.H. (2009). The social network structure of a wild meerkat population: 2. Intragroup interactions. *Behav. Ecol. Sociobiol.* *64*, 81–95.
- Madden, J.R., Drewe, J.A., Pearce, G.P., and Clutton-Brock, T.H. (2011). The social network structure of a wild meerkat population: 3. Position of individuals within networks. *Behav. Ecol. Sociobiol.* *65*, 1857–1871.
- Maior, R.S., Hori, E., Tomaz, C., Ono, T., and Nishijo, H. (2010). The monkey pulvinar neurons differentially respond to emotional expressions of human faces. *Behav. Brain Res.* *215*, 129–135.
- Mann, J., Connor, R.C., Tyack, P.L., and Whitehead, H., eds. (2000). *Cetacean Societies: Field Studies of Dolphins and Whales* (University of Chicago Press).
- Marciniak, K., Atabaki, A., Dicke, P.W., and Thier, P. (2014). Disparate substrates for head gaze following and face perception in the monkey superior temporal sulcus. *eLife* *3*, e03222.
- McCrea, R.A., and Gdowski, G.T. (2003). Firing behaviour of squirrel monkey eye movement-related vestibular nucleus neurons during gaze saccades. *J. Physiol.* *546*, 207–224.
- McGurk, H., and MacDonald, J. (1976). Hearing lips and seeing voices. *Nature* *264*, 746–748.
- McKone, E., Crookes, K., Jeffery, L., and Dilks, D.D. (2012). A critical review of the development of face recognition: experience is less important than previously believed. *Cogn. Neuropsychol.* *29*, 174–212.
- McMahon, D.B., Russ, B.E., Elnaiem, H.D., Kurnikova, A.I., and Leopold, D.A. (2015). Single-unit activity during natural vision: diversity, consistency, and spatial sensitivity among AF face patch neurons. *J. Neurosci.* *35*, 5537–5548.
- Meyer-Lindenberg, A., Domes, G., Kirsch, P., and Heinrichs, M. (2011). Oxytocin and vasopressin in the human brain: social neuropeptides for translational medicine. *Nat. Rev. Neurosci.* *12*, 524–538.
- Micheletta, J., Whitehouse, J., Parr, L.A., and Waller, B.M. (2015). Facial expression recognition in crested macaques (*Macaca nigra*). *Anim. Cogn.* *18*, 985–990.
- Middleton, F.A., and Strick, P.L. (1994). Anatomical evidence for cerebellar and basal ganglia involvement in higher cognitive function. *Science* *266*, 458–461.
- Miller, C.T., and Bee, M.A. (2012). Receiver psychology turns 20: is it time for a broader approach? *Anim. Behav.* *83*, 331–343.
- Miller, C.T., and Wang, X. (2006). Sensory-motor interactions modulate a primate vocal behavior: antiphonal calling in common marmosets. *J. Comp. Physiol. A Neuroethol. Sens. Neural Behav. Physiol.* *192*, 27–38.
- Miller, C.T., and Wren Thomas, A. (2012). Individual recognition during bouts of antiphonal calling in common marmosets. *J. Comp. Physiol. A Neuroethol. Sens. Neural Behav. Physiol.* *198*, 337–346.
- Miller, C.T., Beck, K., Meade, B., and Wang, X. (2009a). Antiphonal call timing in marmosets is behaviorally significant: interactive playback experiments. *J. Comp. Physiol. A Neuroethol. Sens. Neural Behav. Physiol.* *195*, 783–789.
- Miller, C.T., Eliades, S.J., and Wang, X. (2009b). Motor planning for vocal production in common marmosets. *Anim. Behav.* *78*, 1195–1203.
- Miller, C.T., Dimauro, A., Pistorio, A., Hendry, S., and Wang, X. (2010a). Vocalization induced cFos expression in marmoset cortex. *Front. Integr. Neurosci.* *4*, 128.
- Miller, C.T., Mandel, K., and Wang, X. (2010b). The communicative content of the common marmoset phee call during antiphonal calling. *Am. J. Primatol.* *72*, 974–980.
- Miller, C.T., Thomas, A.W., Nummela, S.U., and de la Mothe, L.A. (2015). Responses of primate frontal cortex neurons during natural vocal communication. *J. Neurophysiol.* *114*, 1158–1171.
- Mitani, J.C., Call, J., Kappeler, P.M., Palombit, R.A., and Silk, J.B., eds. (2012). *The Evolution of Primate Societies* (University of Chicago).
- Mitchell, J.F., and Leopold, D.A. (2015). The marmoset monkey as a model for visual neuroscience. *Neurosci. Res.* *93*, 20–46.
- Mitchell, J.F., Reynolds, J.H., and Miller, C.T. (2014). Active vision in marmosets: a model system for visual neuroscience. *J. Neurosci.* *34*, 1183–1194.
- Moessner, R., Marshall, C.R., Sutcliffe, J.S., Skaug, J., Pinto, D., Vincent, J., Zwaigenbaum, L., Fernandez, B., Roberts, W., Szatmari, P., and Scherer, S.W. (2007). Contribution of SHANK3 mutations to autism spectrum disorder. *Am. J. Hum. Genet.* *81*, 1289–1297.

- Morrill, R.J., Thomas, A.W., Schiel, N., Souto, A., and Miller, C.T. (2013). The effect of habitat acoustics on common marmoset vocal signal transmission. *Am. J. Primatol.* *75*, 904–916.
- Mosher, C.P., Zimmerman, P.E., and Gothard, K.M. (2014). Neurons in the monkey amygdala detect eye contact during naturalistic social interactions. *Curr. Biol.* *24*, 2459–2464.
- Murphy, W.J., Eizirik, E., Johnson, W.E., Zhang, Y.P., Ryder, O.A., and O'Brien, S.J. (2001). Molecular phylogenetics and the origins of placental mammals. *Nature* *409*, 614–618.
- Mustoe, A.C., Cavanaugh, J., Harnisch, A.M., Thompson, B.E., and French, J.A. (2015). Do marmosets care to share? Oxytocin treatment reduces prosocial behavior toward strangers. *Horm. Behav.* *71*, 83–90.
- Niu, Y., Shen, B., Cui, Y., Chen, Y., Wang, J., Wang, L., Kang, Y., Zhao, X., Si, W., Li, W., et al. (2014). Generation of gene-modified cynomolgus monkey via Cas9/RNA-mediated gene targeting in one-cell embryos. *Cell* *156*, 836–843.
- Norcross, J.L., and Newman, J.D. (1993). Context and gender specific differences in the acoustic structure of common marmoset (*Callithrix jacchus*) phee calls. *Am. J. Primatol.* *30*, 37–54.
- Norcross, J.L., and Newman, J.D. (1997). Social context affects phee call production by nonreproductive common marmosets (*Callithrix jacchus*). *Am. J. Primatol.* *43*, 135–146.
- O'Keefe, J., and Dostrovsky, J. (1971). The hippocampus as a spatial map. Preliminary evidence from unit activity in the freely-moving rat. *Brain Res.* *34*, 171–175.
- Oh, S.W., Harris, J.A., Ng, L., Winslow, B., Cain, N., Mihalas, S., Wang, Q., Lau, C., Kuan, L., Henry, A.M., et al. (2014). A mesoscale connectome of the mouse brain. *Nature* *508*, 207–214.
- Okano, H., Hikishima, K., Iriki, A., and Sasaki, E. (2012). The common marmoset as a novel animal model system for biomedical and neuroscience research applications. *Semin. Fetal Neonatal Med.* *17*, 336–340.
- Pagani, J.H., Zhao, M., Cui, Z., Avram, S.K., Caruana, D.A., Dudek, S.M., and Young, W.S. (2015). Role of the vasopressin 1b receptor in rodent aggressive behavior and synaptic plasticity in hippocampal area CA2. *Mol. Psychiatry* *20*, 490–499.
- Palombit, R.A., Seyfarth, R.M., and Cheney, D.L. (1997). The adaptive value of 'friendships' to female baboons: experimental and observational evidence. *Anim. Behav.* *54*, 599–614.
- Parr, L.A., and Heintz, M. (2009). Facial expression recognition in rhesus monkeys, *Macaca mulatta*. *Anim. Behav.* *77*, 1507–1513.
- Passamani, M. (1995). Field observation of a group of Geoffroy's marmosets mobbing a Margay cat. *Folia Primatol. (Basel)* *64*, 163–166.
- Peça, J., Feliciano, C., Ting, J.T., Wang, W., Wells, M.F., Venkatraman, T.N., Lascola, C.D., Fu, Z., and Feng, G. (2011). Shank3 mutant mice display autistic-like behaviours and striatal dysfunction. *Nature* *472*, 437–442.
- Perrett, D.I., Smith, P.A.J., Potter, D.D., Mistlin, A.J., Head, A.S., Milner, A.D., and Jeeves, M.A. (1985). Visual cells in the temporal cortex sensitive to face view and gaze direction. *Proc. R. Soc. Lond. B Biol. Sci.* *223*, 293–317.
- Philippens, I.H., 't Hart, B.A., and Torres, G. (2010). The MPTP marmoset model of parkinsonism: a multi-purpose non-human primate model for neurodegenerative diseases. *Drug Discov. Today* *15*, 985–990.
- Pistorio, A.L., Vintch, B., and Wang, X. (2006). Acoustic analysis of vocal development in a New World primate, the common marmoset (*Callithrix jacchus*). *J. Acoust. Soc. Am.* *120*, 1655–1670.
- Polosecki, P., Moeller, S., Schweers, N., Romanski, L.M., Tsao, D.Y., and Freiwald, W.A. (2013). Faces in motion: selectivity of macaque and human face processing areas for dynamic stimuli. *J. Neurosci.* *33*, 11768–11773.
- Portfors, C.V. (2007). Types and functions of ultrasonic vocalizations in laboratory rats and mice. *J. Am. Assoc. Lab. Anim. Sci.* *46*, 28–34.
- Preuschhof, S. (1995). 'Laughter' and 'Smiling' in Macaques - An Evolutionary Approach (University of Utrecht Press).
- Preuschhof, S. (2000). Primate faces and facial expressions. *Soc. Res. (New York)* *67*, 245–271.
- Rendell, L., and Whitehead, H. (2001). Culture in whales and dolphins. *Behav. Brain Sci.* *24*, 309–324, discussion 324–382.
- Roberts, A.C., and Wallis, J.D. (2000). Inhibitory control and affective processing in the prefrontal cortex: neuropsychological studies in the common marmoset. *Cereb. Cortex* *10*, 252–262.
- Roberts, A.C., De Salvia, M.A., Wilkinson, L.S., Collins, P., Muir, J.L., Everitt, B.J., and Robbins, T.W. (1994). 6-Hydroxydopamine lesions of the prefrontal cortex in monkeys enhance performance on an analog of the Wisconsin Card Sort Test: possible interactions with subcortical dopamine. *J. Neurosci.* *14*, 2531–2544.
- Roberts, T.F., Gobes, S.M.H., Murugan, M., Ölveczky, B.P., and Mooney, R. (2012). Motor circuits are required to encode a sensory model for imitative learning. *Nat. Neurosci.* *15*, 1454–1459.
- Romanski, L.M., Averbeck, B.B., and Diltz, M. (2005). Neural representation of vocalizations in the primate ventrolateral prefrontal cortex. *J. Neurophysiol.* *93*, 734–747.
- Romo, R., and de Lafuente, V. (2013). Conversion of sensory signals into perceptual decisions. *Prog. Neurobiol.* *103*, 41–75.
- Romo, R., Hernández, A., and Zainos, A. (2004). Neuronal correlates of a perceptual decision in ventral premotor cortex. *Neuron* *41*, 165–173.
- Rosati, A.G., and Hare, B. (2009). Looking past the model species: diversity in gaze-following skills across primates. *Curr. Opin. Neurobiol.* *19*, 45–51.
- Rosati, A., Santos, L., and Hare, B. (2010). Primate social cognition: Thirty years after Premack and Woodruff. In *Primate Neuroethology*, M. Platt and A.A. Ghazanfar, eds. (Oxford University Press), pp. 117–142.
- Ross, C.N., French, J.A., and Ortí, G. (2007). Germ-line chimerism and paternal care in marmosets (*Callithrix kuhlii*). *Proc. Natl. Acad. Sci. USA* *104*, 6278–6282.
- Roy, S., and Wang, X. (2012). Wireless multi-channel single unit recording in freely moving and vocalizing primates. *J. Neurosci. Methods* *203*, 28–40.
- Roy, S., Miller, C.T., Gottsch, D., and Wang, X. (2011). Vocal control by the common marmoset in the presence of interfering noise. *J. Exp. Biol.* *214*, 3619–3629.
- Rylands, A.B., Coimbra-Filho, A.F., and Mittermeier, R.A. (2009). The systematics and distributions of the marmosets (*Callithrix*, *Callibela*, *Cebuella*, and *Mico*) and *Callimico* (*Callimico*) (*Callitrichidae*, *Primates*). In *The Smallest Anthropoids: The Marmoset/Callimico Radiation*, S.M. Ford, L.M. Porter, and L.C. Davis, eds. (Springer), pp. 25–62.
- Sadakane, O., Masamizu, Y., Watakabe, A., Terada, S., Ohtsuka, M., Takaji, M., Mizukami, H., Ozawa, K., Kawasaki, H., Matsuzaki, M., and Yamamori, T. (2015). Long-term Two-Photon calcium imaging of neuronal populations with subcellular resolution in adult non-human primates. *Cell Rep.* *13*, 1989–1999.
- Saito, A. (2015). The marmoset as a model for the study of primate parental behavior. *Neurosci. Res.* *93*, 99–109.
- Salzman, C.D., Britten, K.H., and Newsome, W.T. (1990). Cortical microstimulation influences perceptual judgements of motion direction. *Nature* *346*, 174–177.
- Santos, L.R., and Hauser, M.D. (1999). How monkeys see the eyes: cotton-top tamarins' reaction to changes in visual attention and action. *Anim. Cogn.* *2*, 131–139.
- Sasaki, E., Suemizu, H., Shimada, A., Hanazawa, K., Oiwa, R., Kamioka, M., Tomioka, I., Sotomaru, Y., Hirakawa, R., Eto, T., et al. (2009). Generation of transgenic non-human primates with germline transmission. *Nature* *459*, 523–527.
- Schiel, N., and Huber, L. (2006). Social influences on the development of foraging behavior in free-living common marmosets (*Callithrix jacchus*). *Am. J. Primatol.* *68*, 1150–1160.
- Seyfarth, R.M., and Cheney, D.L. (2012). Knowledge of social relations. In *The Evolution of Primate Societies*, J. Mitani, J. Call, P.M. Kappeler, R. Palombit, and J.B. Silk, eds. (University of Chicago Press), pp. 629–642.
- Seyfarth, R.M., and Cheney, D.L. (2014). The evolution of language from social cognition. *Curr. Opin. Neurobiol.* *28*, 5–9.

- Seyfarth, R.M., and Cheney, D.L. (2015). Social cognition. *Anim. Behav.* *103*, 191–202.
- Seyfarth, R.M., Cheney, D.L., and Bergman, T.J. (2005). Primate social cognition and the origins of language. *Trends Cogn. Sci.* *9*, 264–266.
- Shelley, E.L., and Blumstein, D.T. (2005). The evolution of vocal alarm communication in rodents. *Behav. Ecol.* *16*, 169–177.
- Shultz, S., Opie, C., and Atkinson, Q.D. (2011). Stepwise evolution of stable sociality in primates. *Nature* *479*, 219–222.
- Simões, C.S., Vianney, P.V.R., de Moura, M.M., Freire, M.A.M., Mello, L.E., Sameshima, K., Araújo, J.F., Nicolelis, M.A.L., Mello, C.V., and Ribeiro, S. (2010). Activation of frontal neocortical areas by vocal production in marmosets. *Front. Integr. Neurosci.* *4*, 1–12.
- Smith, T. (2006). Individual olfactory signatures in common marmosets (*Callithrix jacchus*). *Am. J. Primatol.* *68*, 585–604.
- Smith, T.E., Tomlinson, A.J., Mlotkiewicz, J.A., and Abbott, D.H. (2001). Female marmoset monkeys (*Callithrix jacchus*) can be identified from the chemical composition of their scent marks. *Chem. Senses* *26*, 449–458.
- Smith, A.S., Agmo, A., Birnie, A.K., and French, J.A. (2010). Manipulation of the oxytocin system alters social behavior and attraction in pair-bonding primates, *Callithrix penicillata*. *Horm. Behav.* *57*, 255–262.
- Snow, C. (1977). The development of conversation between mothers and babies. *J. Child Lang.* *4*, 1–22.
- Solomon, N., and French, J.A. (1997). The study of mammalian cooperative breeding. In *Cooperative Breeding in Mammals*, N. Solomon and J.A. French, eds. (Cambridge University Press), pp. 1–10.
- Solomon, S.G., and Rosa, M.G.P. (2014). A simpler primate brain: the visual system of the marmoset monkey. *Front. Neural Circuits* *8*, 96.
- Song, X., Osmanski, M.S., Guo, Y., and Wang, X. (2016). Complex pitch perception mechanisms are shared by humans and a New World monkey. *Proc. Natl. Acad. Sci. USA* *113*, 781–786.
- Stevenson, E.L., and Caldwell, H.K. (2014). Lesions to the CA2 region of the hippocampus impair social memory in mice. *Eur. J. Neurosci.* *40*, 3294–3301.
- Stivers, T., Enfield, N.J., Brown, P., Englert, C., Hayashi, M., Heinemann, T., Hoymann, G., Rossano, F., de Ruiter, J.P., Yoon, K.E., and Levinson, S.C. (2009). Universals and cultural variation in turn-taking in conversation. *Proc. Natl. Acad. Sci. USA* *106*, 10587–10592.
- Sugase, Y., Yamane, S., Ueno, S., and Kawano, K. (1999). Global and fine information coded by single neurons in the temporal visual cortex. *Nature* *400*, 869–873.
- Takahashi, D.Y., Narayanan, D.Z., and Ghazanfar, A.A. (2013). Coupled oscillator dynamics of vocal turn-taking in monkeys. *Curr. Biol.* *23*, 2162–2168.
- Tardif, S.D., Smucny, D.A., Abbott, D.H., Mansfield, K., Schultz-Darken, N., and Yamamoto, M.E. (2003). Reproduction in captive common marmosets (*Callithrix jacchus*). *Comp. Med.* *53*, 364–368.
- Teufel, C., Gutmann, A., Pirov, R., and Fischer, J. (2010). Facial expressions modulate the ontogenetic trajectory of gaze-following among monkeys. *Dev. Sci.* *13*, 913–922.
- Toarmino, C.R., Jovanovic, V., and Miller, C.T. (2016). Decisions to communicate in the primate ecological and social landscapes. In *Perception and Cognition in Animal Communication*, M.A. Bee and C.T. Miller, eds. (Springer Verlag) in press.
- Tomasello, M. (1995). Joint attention as social cognition. In *Joint Attention: Its Origins and Role in Development*, C. Moore and P. Dunham, eds. (Psychology Press), pp. 103–130.
- Tomasello, M., and Call, J. (1997). *Primate Cognition* (Oxford University Press).
- Tomasello, M., and Carpenter, M. (2005). The emergence of social cognition in three young chimpanzees. *Monogr. Soc. Res. Child Dev.* *70*, vii–132.
- Tomasello, M., Hare, B., and Fogleman, T. (2001). The ontogeny of gaze following in chimpanzees, Pan troglodytes, and rhesus macaques, *Macaca mulatta*. *Anim. Behav.* *61*, 335–343.
- Tsao, D.Y., and Livingstone, M.S. (2008). Mechanisms of face perception. *Annu. Rev. Neurosci.* *31*, 411–437.
- Tsao, D.Y., Freiwald, W.A., Tootell, R.B., and Livingstone, M.S. (2006). A cortical region consisting entirely of face-selective cells. *Science* *311*, 670–674.
- Tsao, D.Y., Moeller, S., and Freiwald, W.A. (2008). Comparing face patch systems in macaques and humans. *Proc. Natl. Acad. Sci. USA* *105*, 19514–19519.
- Tsunada, J., Liu, A.S.K., Gold, J.I., and Cohen, Y.E. (2016). Causal contribution of primate auditory cortex to auditory perceptual decision-making. *Nat. Neurosci.* *19*, 135–142.
- Tye, K.M., and Deisseroth, K. (2012). Optogenetic investigation of neural circuits underlying brain disease in animal models. *Nat. Rev. Neurosci.* *13*, 251–266.
- Ungerleider, L.G., and Mishkin, M. (1982). Two cortical visual systems. In *Analysis of visual behavior*, D.G. Ingle, M.A. Goodale, and R.J.Q. Mansfield, eds. (MIT Press), pp. 549–586.
- van de Waal, E., Borgeaud, C., and Whiten, A. (2013). Potent social learning and conformity shape a wild primate's foraging decisions. *Science* *340*, 483–485.
- Viana, D.S., Gordo, I., Sucena, E., and Moita, M.A.P. (2010). Cognitive and motivational requirements for the emergence of cooperation in a rat social game. *PLoS ONE* *5*, e8483.
- Vick, S.J., Waller, B.M., Parr, L.A., Smith Pasqualini, M.C., and Bard, K.A. (2007). A cross-species comparison of facial morphology and movement in humans and chimpanzees using the facial action coding system (FACS). *J. Nonverbal Behav.* *31*, 1–20.
- Voelkl, B., and Huber, L. (2000). True imitation in marmosets. *Anim. Behav.* *60*, 195–202.
- Voelkl, B., and Huber, L. (2007). Imitation as faithful copying of a novel technique in marmoset monkeys. *PLoS ONE* *2*, e611.
- Wan, H., Feng, C., Teng, F., Yang, S., Hu, B., Niu, Y., Xiang, A.P., Fang, W., Ji, W., Li, W., et al. (2015). One-step generation of p53 gene biallelic mutant *Cynomolgus* monkey via the CRISPR/Cas system. *Cell Res.* *25*, 258–261.
- Wang, X., and Walker, K.M.M. (2012). Neural mechanisms for the abstraction and use of pitch information in auditory cortex. *J. Neurosci.* *32*, 13339–13342.
- Wang, X., Lu, T., Snider, R.K., and Liang, L. (2005). Sustained firing in auditory cortex evoked by preferred stimuli. *Nature* *435*, 341–346.
- Watakabe, A., Ohtsuka, M., Kinoshita, M., Takaji, M., Isa, K., Mizukami, H., Ozawa, K., Isa, T., and Yamamori, T. (2015). Comparative analyses of adeno-associated viral vector serotypes 1, 2, 5, 8 and 9 in marmoset, mouse and macaque cerebral cortex. *Neurosci. Res.* *93*, 144–157.
- Weiner, K.S., and Grill-Spector, K. (2015). The evolution of face processing networks. *Trends Cogn. Sci.* *19*, 240–241.
- Wersinger, S.R., Ginns, E.I., O'Carroll, A.M., Lolait, S.J., and Young, W.S., 3rd (2002). Vasopressin V1b receptor knockout reduces aggressive behavior in male mice. *Mol. Psychiatry* *7*, 975–984.
- Wesson, D.W. (2013). Sniffing behavior communicates social hierarchy. *Curr. Biol.* *23*, 575–580.
- Witemeyer, G., and Getz, W.M. (2007). Hierarchical dominance structure and social organization in African elephants, *Loxodonta africana*. *Anim. Behav.* *73*, 671–681.
- Wobber, V., Wrangham, R., and Hare, B. (2010). Bonobos exhibit delayed development of social behavior and cognition relative to chimpanzees. *Curr. Biol.* *20*, 226–230.
- Wolff, J.O. and Sherman, P.W., eds. (2007). *Rodent Societies: An Ecological and Evolutionary Perspective* (University of Chicago Press).
- Young, L.J. (2002). The neurobiology of social recognition, approach, and avoidance. *Biol. Psychiatry* *51*, 18–26.